



US 20160134373A1

(19) **United States**

(12) **Patent Application Publication**
Gros et al.

(10) **Pub. No.: US 2016/0134373 A1**

(43) **Pub. Date: May 12, 2016**

(54) **DEPLOYING LINE-OF-SIGHT COMMUNICATION NETWORKS**

(52) **U.S. CL.**
CPC **H04B 10/1129** (2013.01)

(71) Applicant: **Facebook, Inc.**, Menlo Park, CA (US)

(57) **ABSTRACT**

(72) Inventors: **Andreas Gros**, Mountain View, CA (US); **Yael Maguire**, Boston, MA (US); **Karthik Yogeewaran**, Fremont, CA (US)

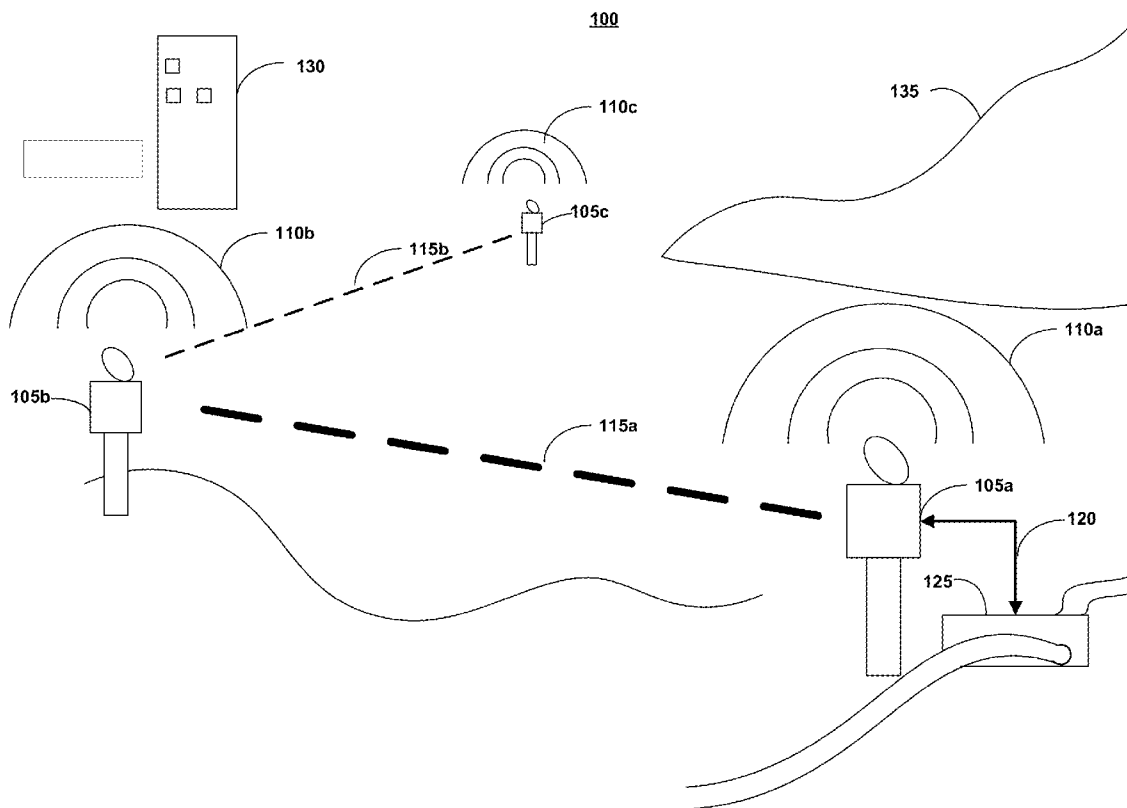
Various of the disclosed embodiments relate to line-of-sight (LOS), e.g., optical, based networks. Systems and methods for determining where to place and how to configure nodes in an optically connected network across a geographic region are provided. Various factors concerning the region may be collected, including, e.g.,: building locations and height, building types, population densities, backbone connection locations, recurring weather factors, geographic elevation, etc. The algorithm may iteratively place nodes based upon the accessible range of a preceding contemplated node position.

(21) Appl. No.: **14/534,690**

(22) Filed: **Nov. 6, 2014**

Publication Classification

(51) **Int. Cl.**
H04B 10/112 (2006.01)



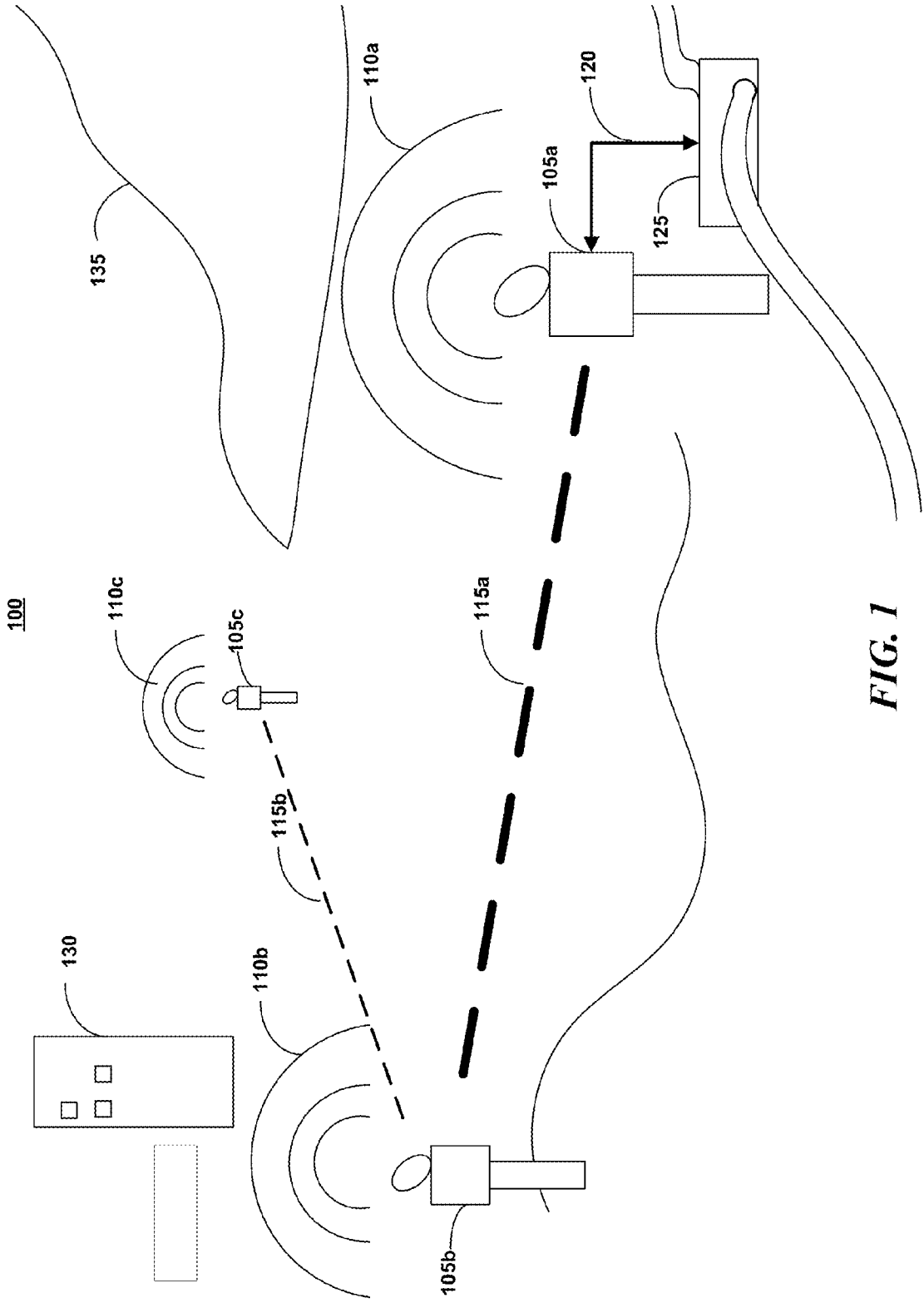


FIG. 1

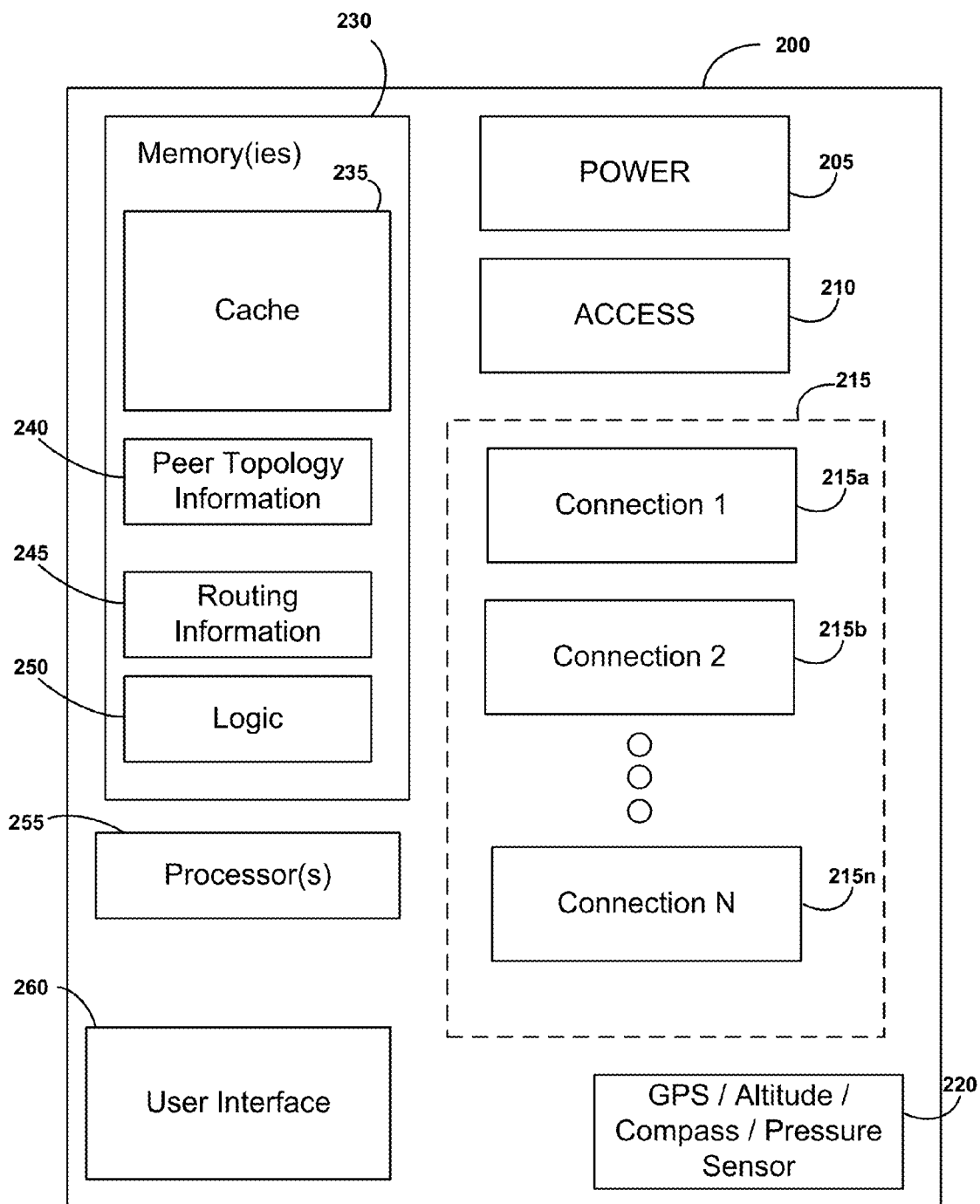


FIG. 2

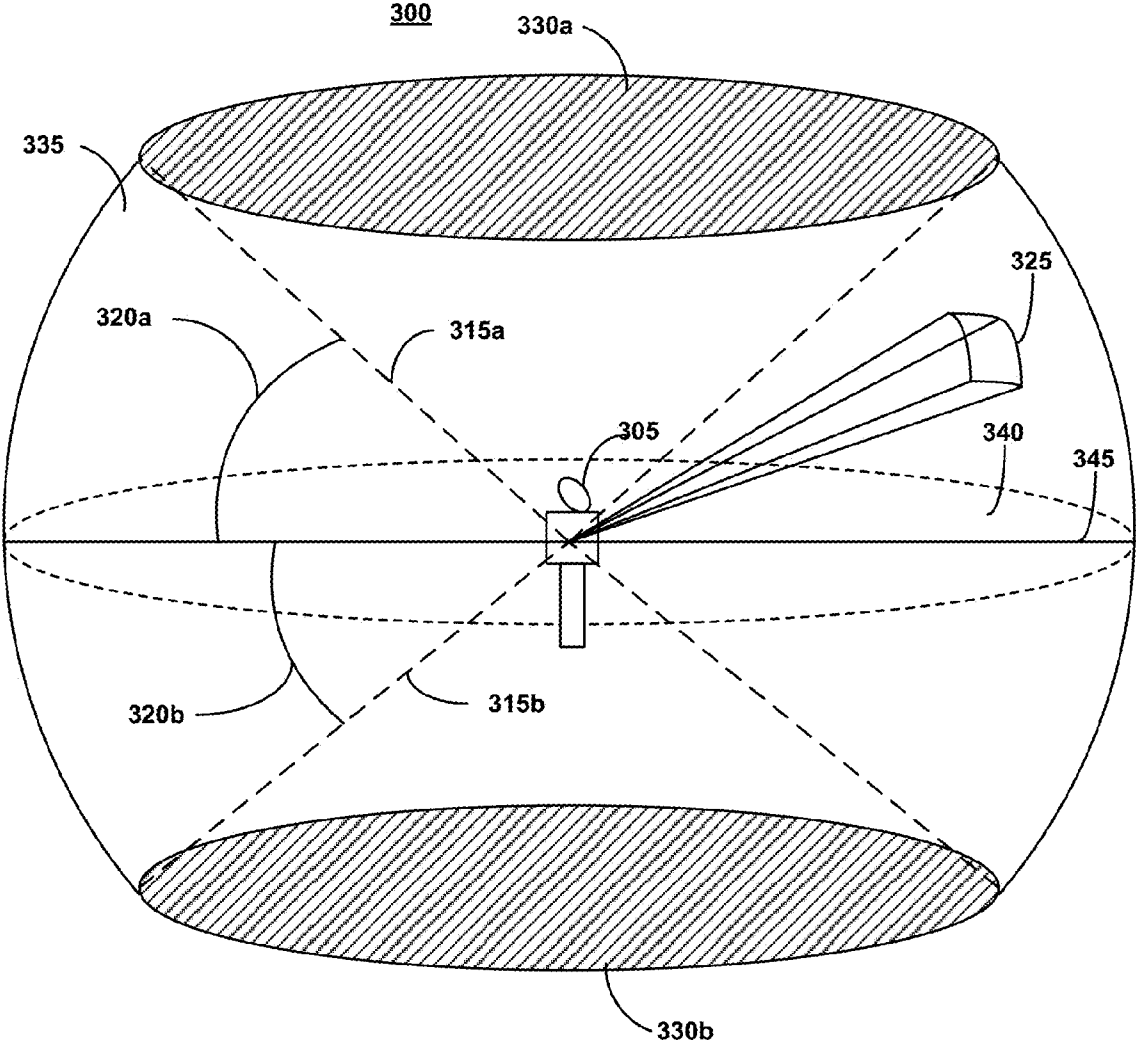


FIG. 3

400

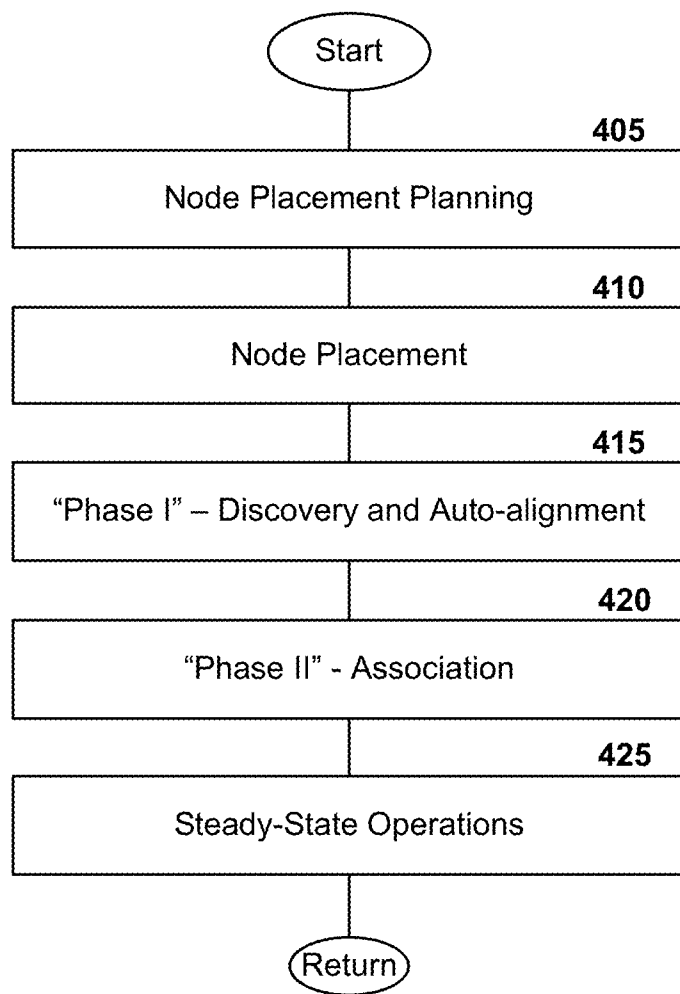


FIG. 4

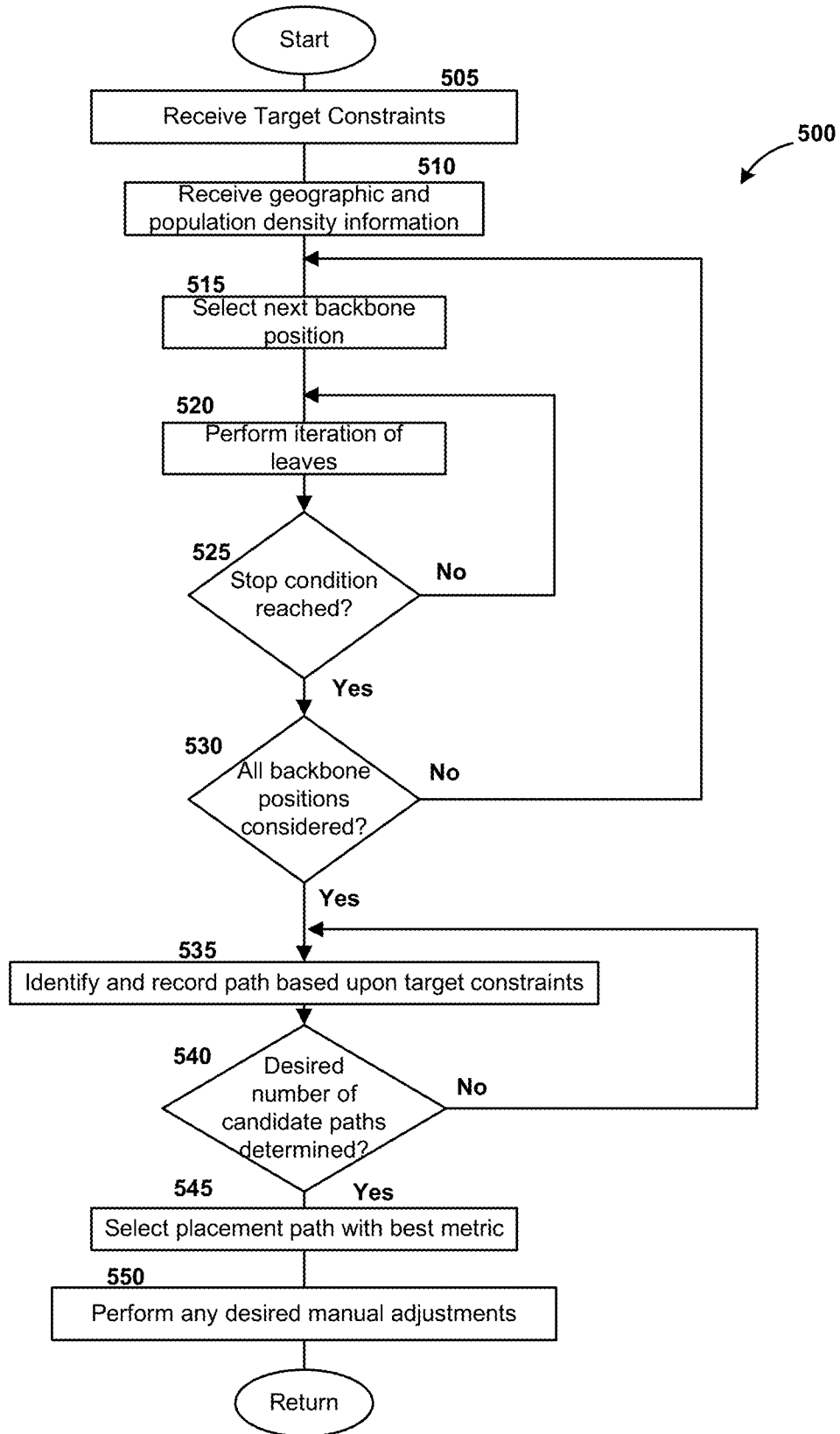


FIG. 5

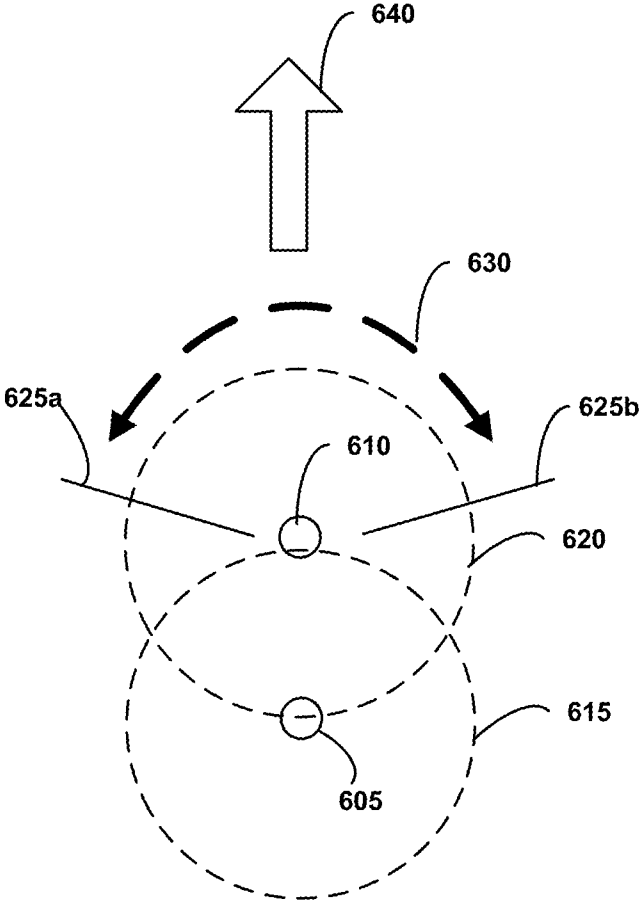


FIG. 6

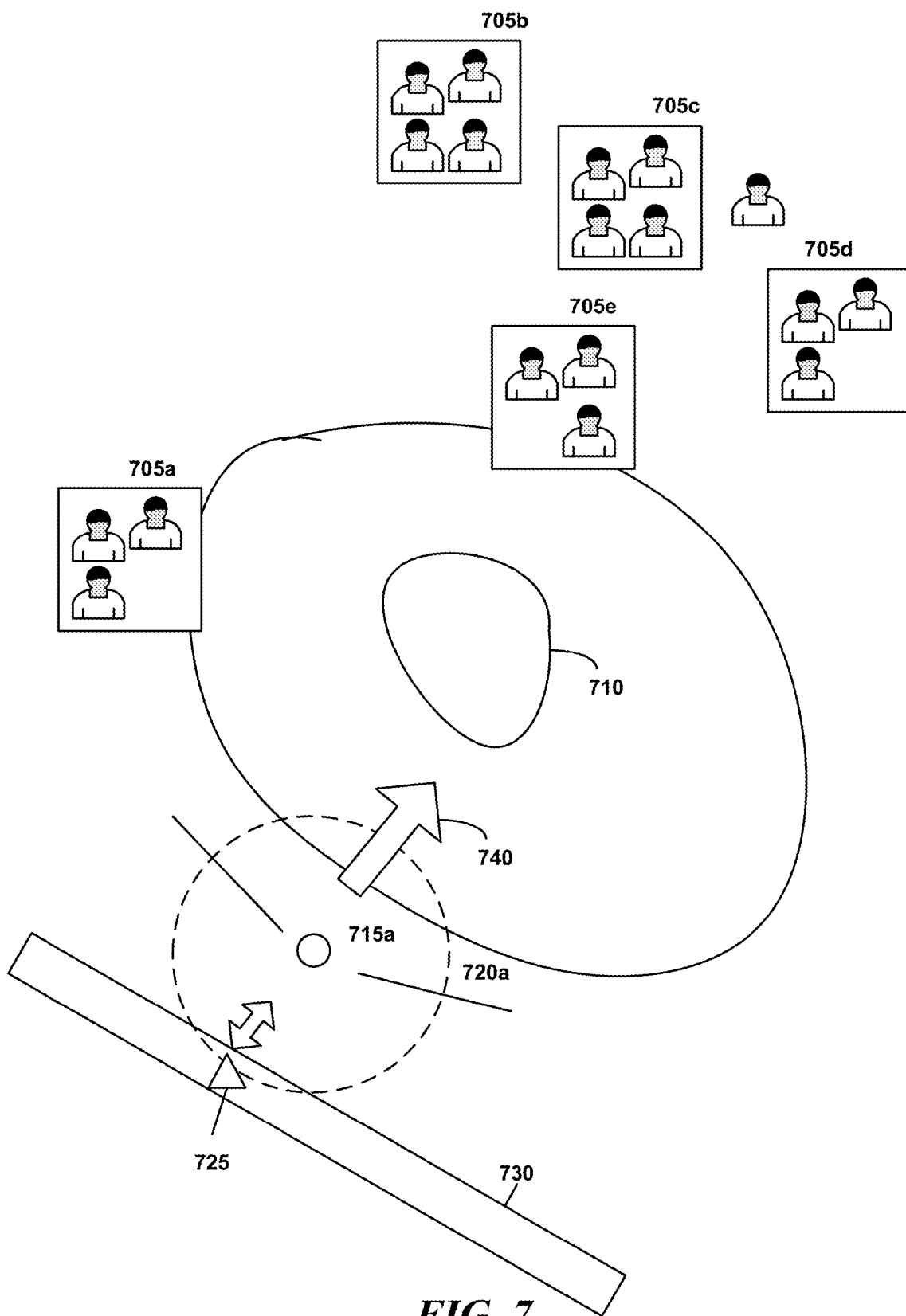
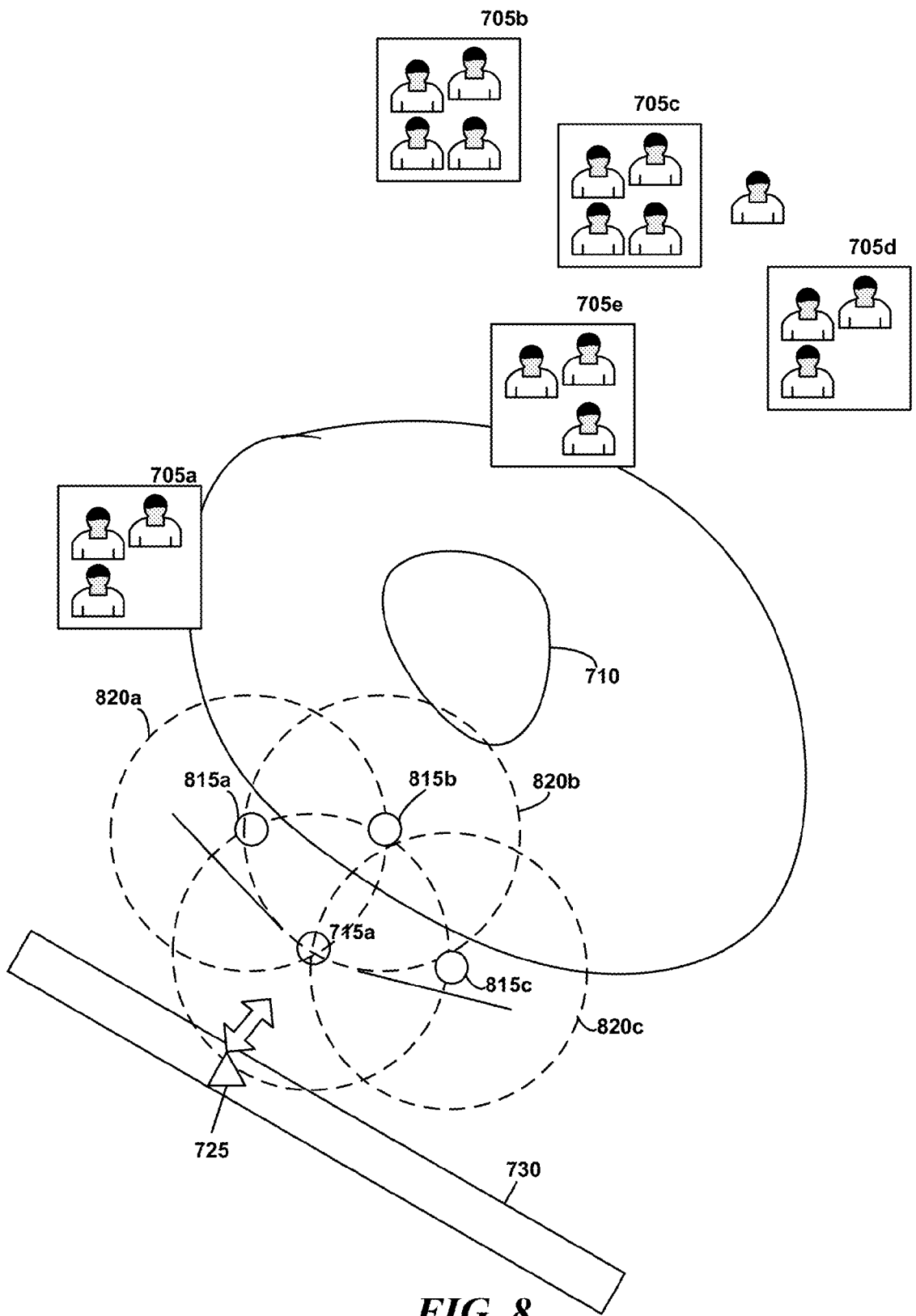


FIG. 7



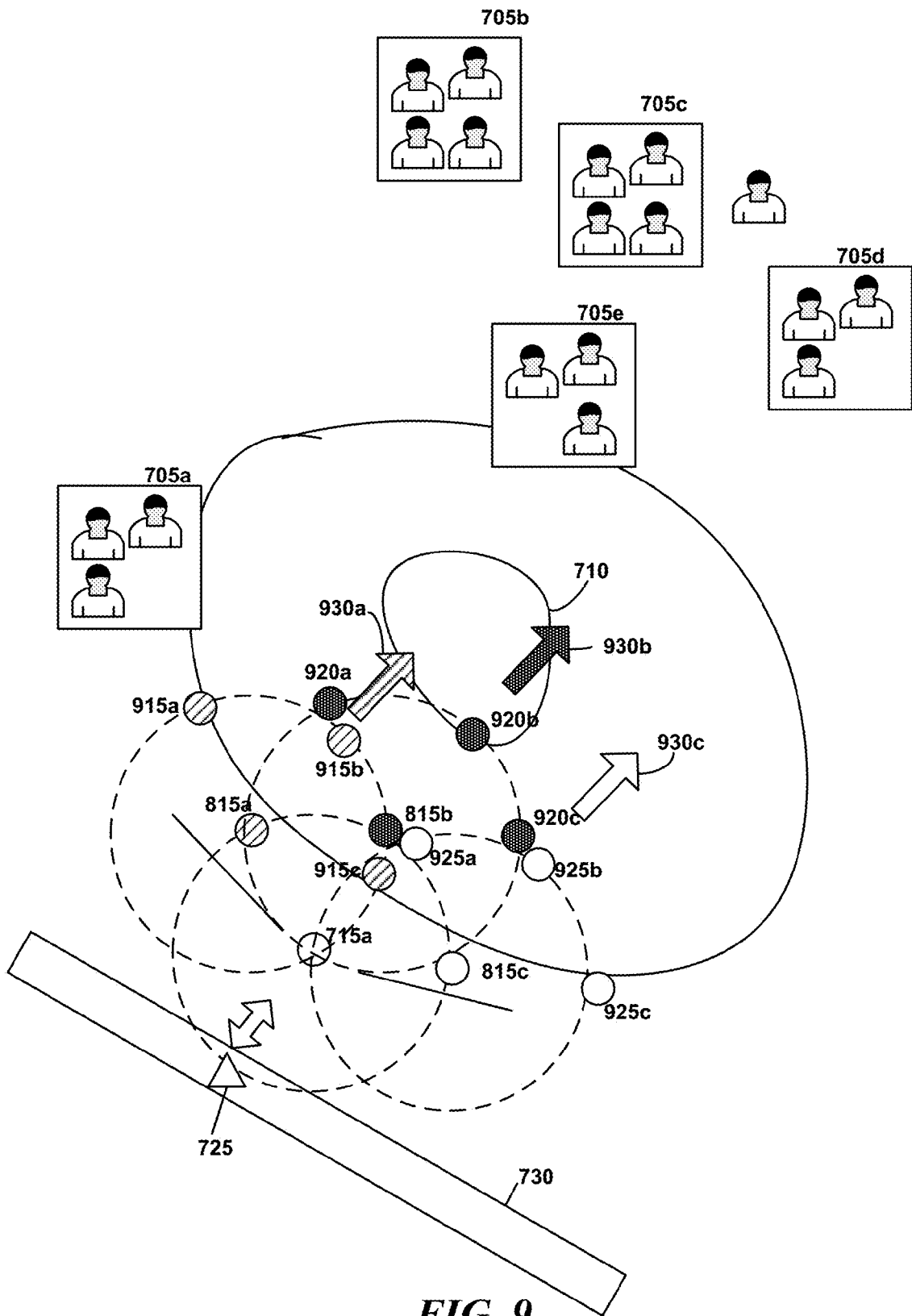


FIG. 9

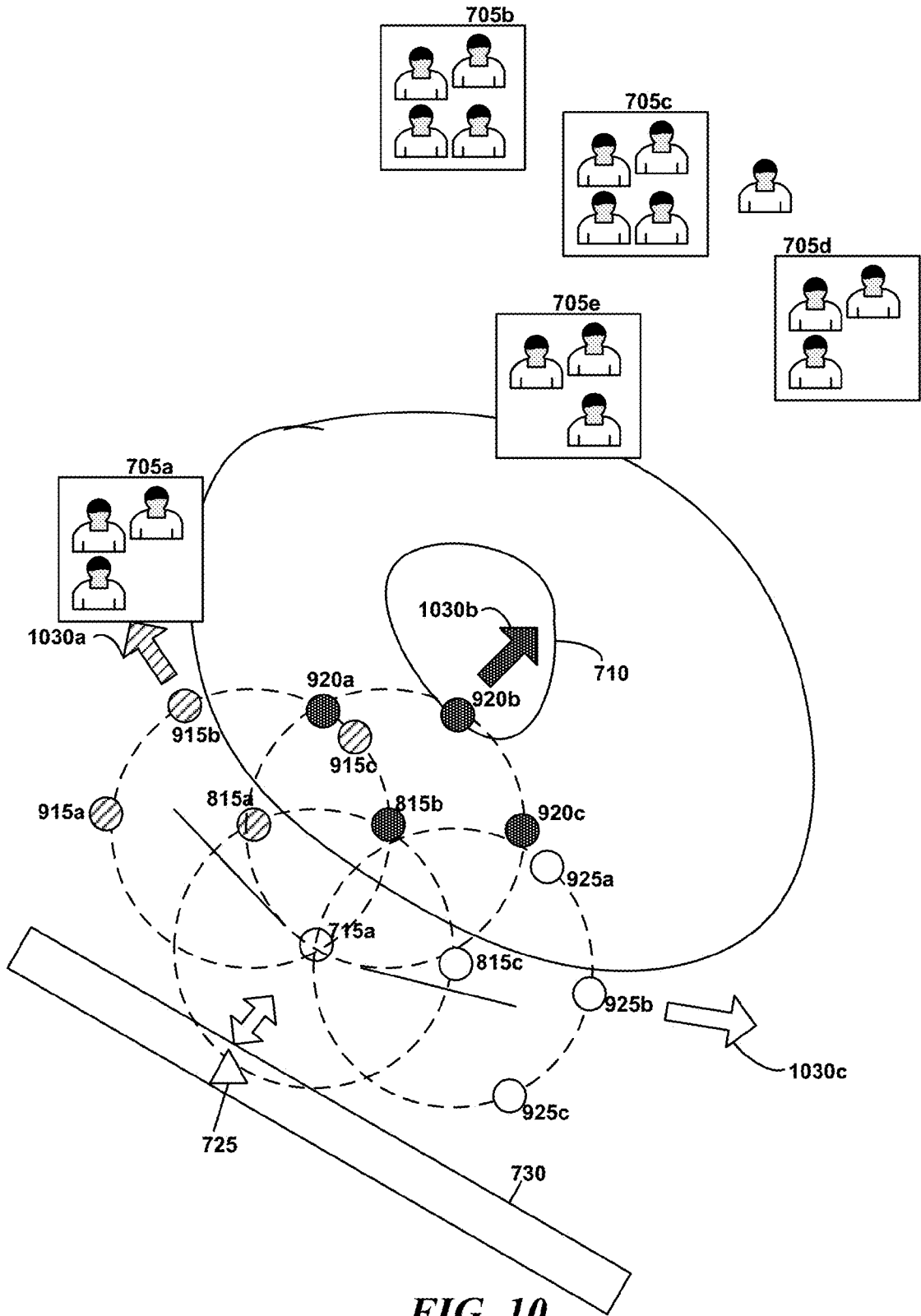


FIG. 10

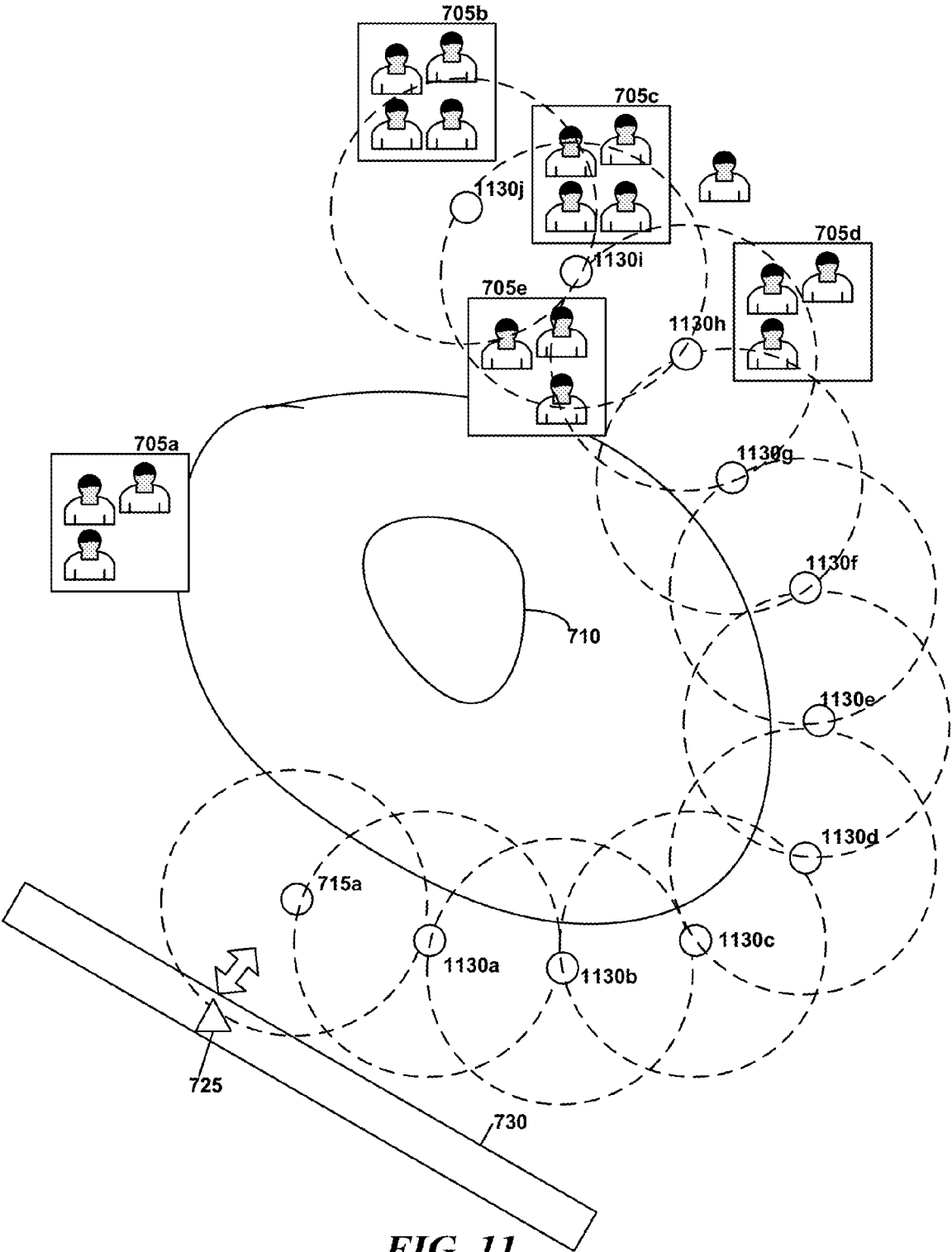


FIG. 11

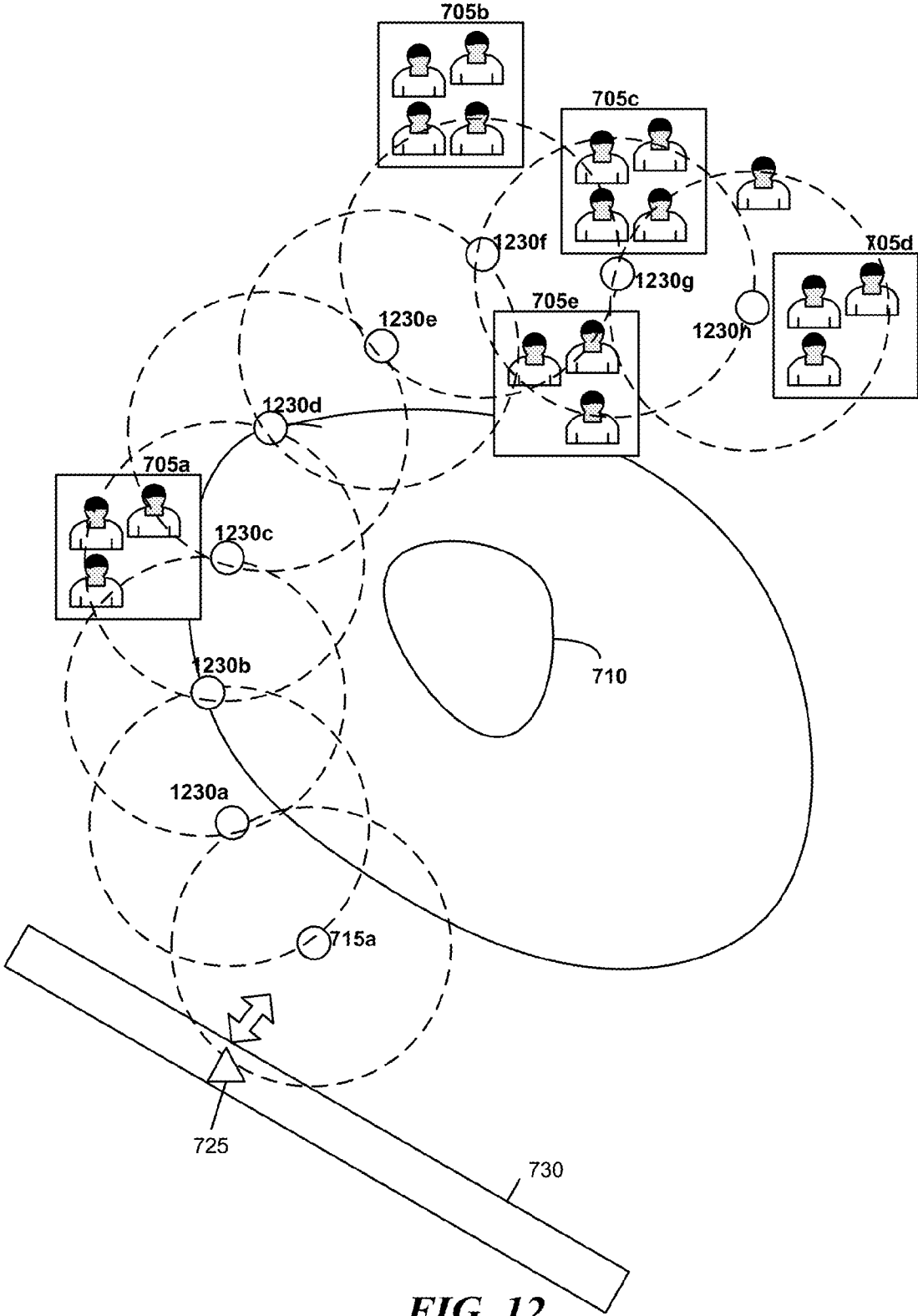


FIG. 12

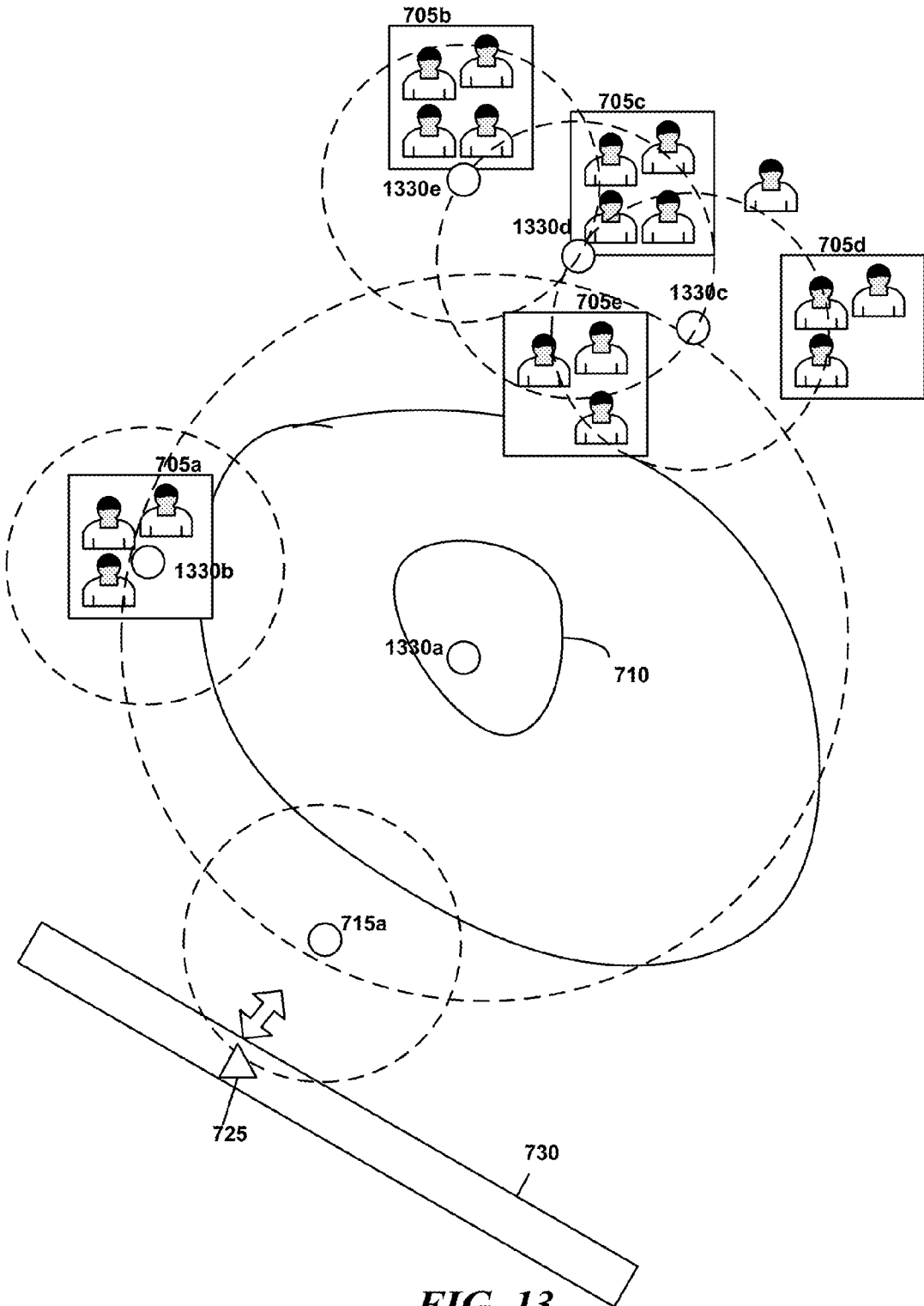


FIG. 13

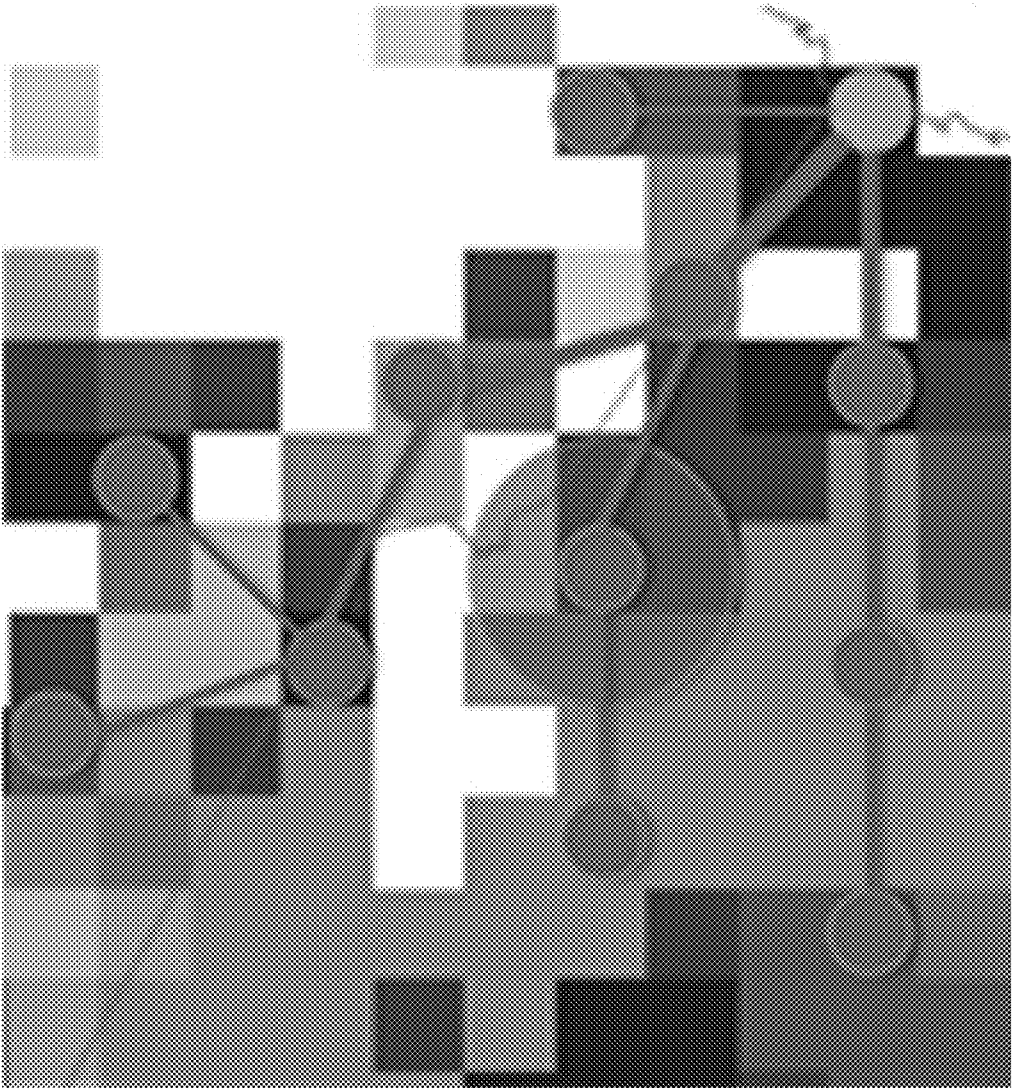


FIG. 14

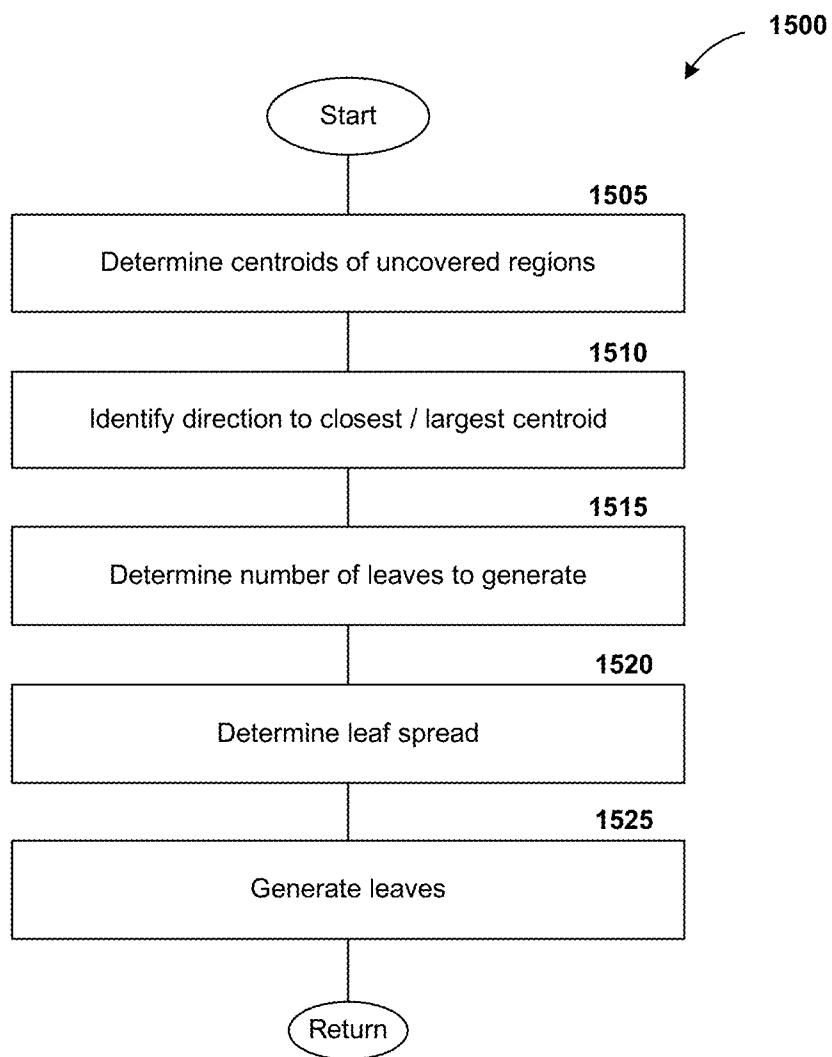


FIG. 15



FIG. 16

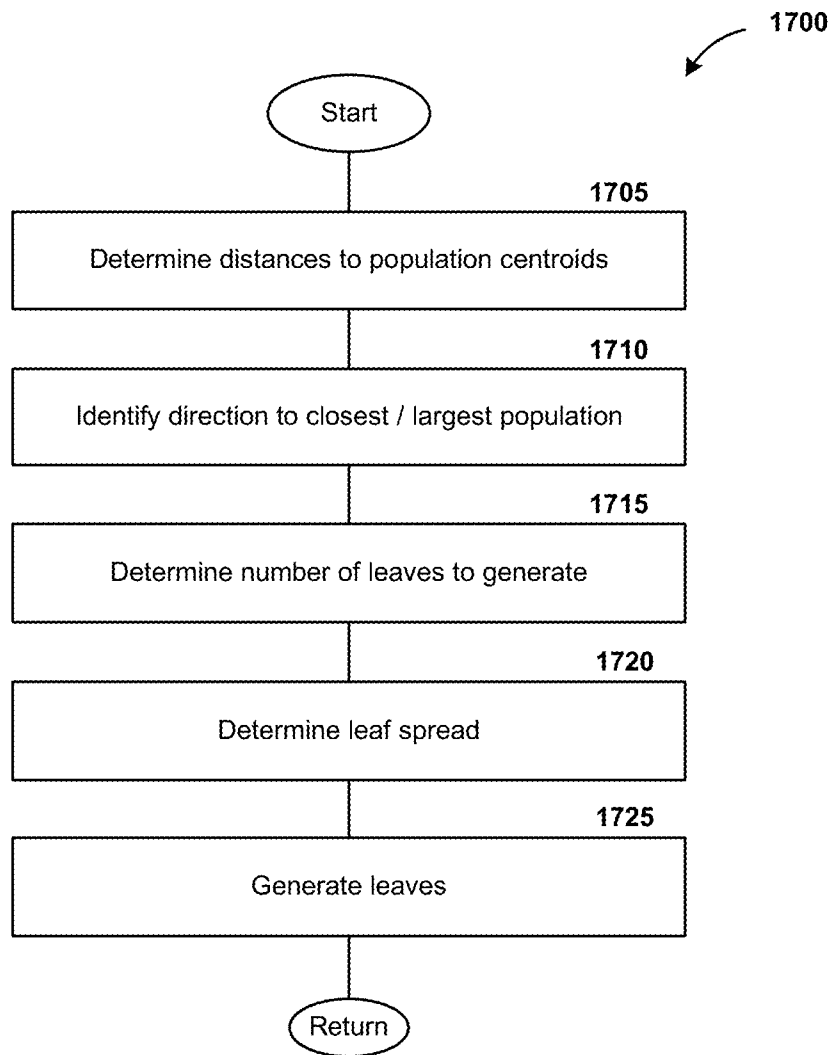


FIG. 17

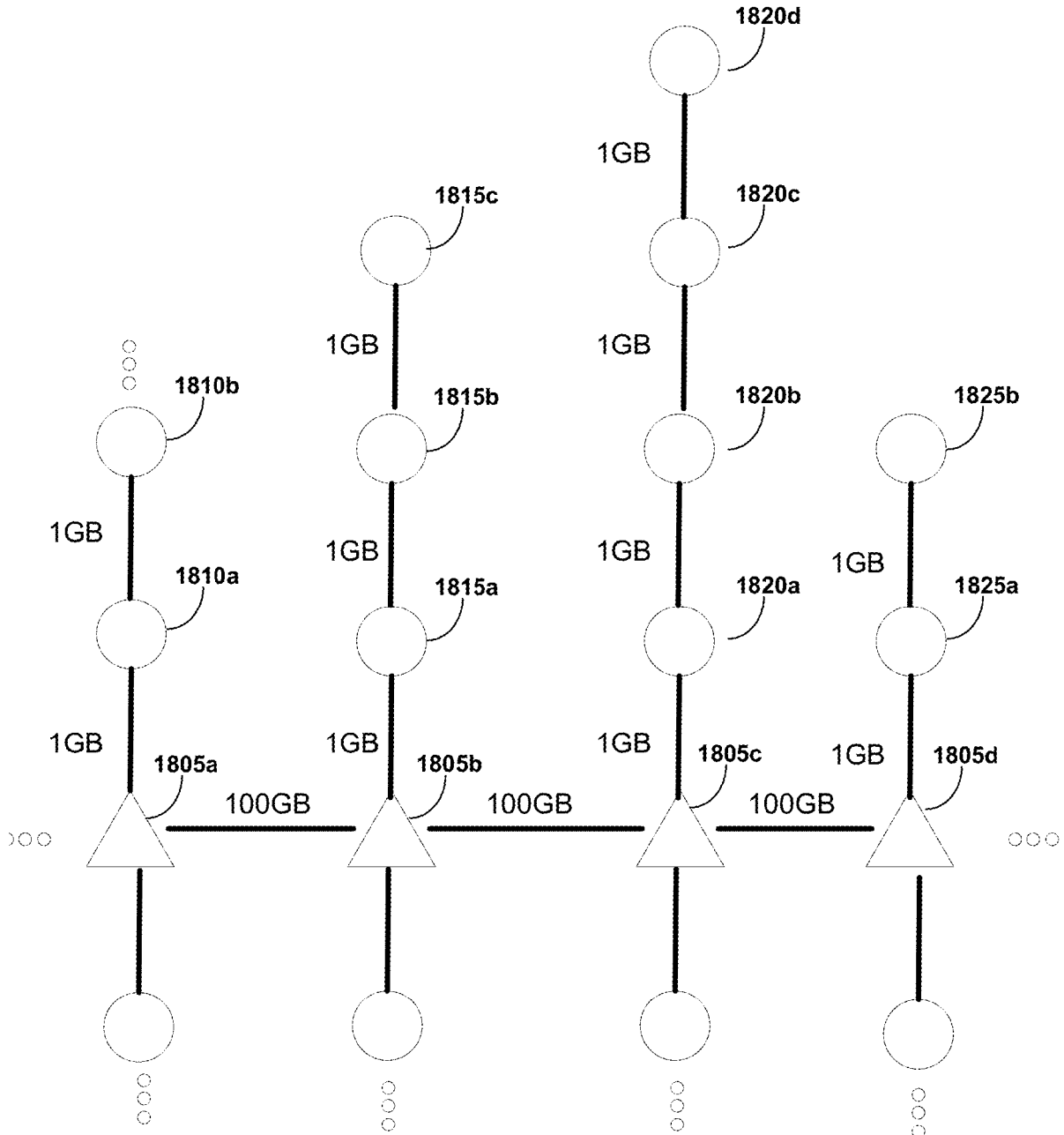


FIG. 18

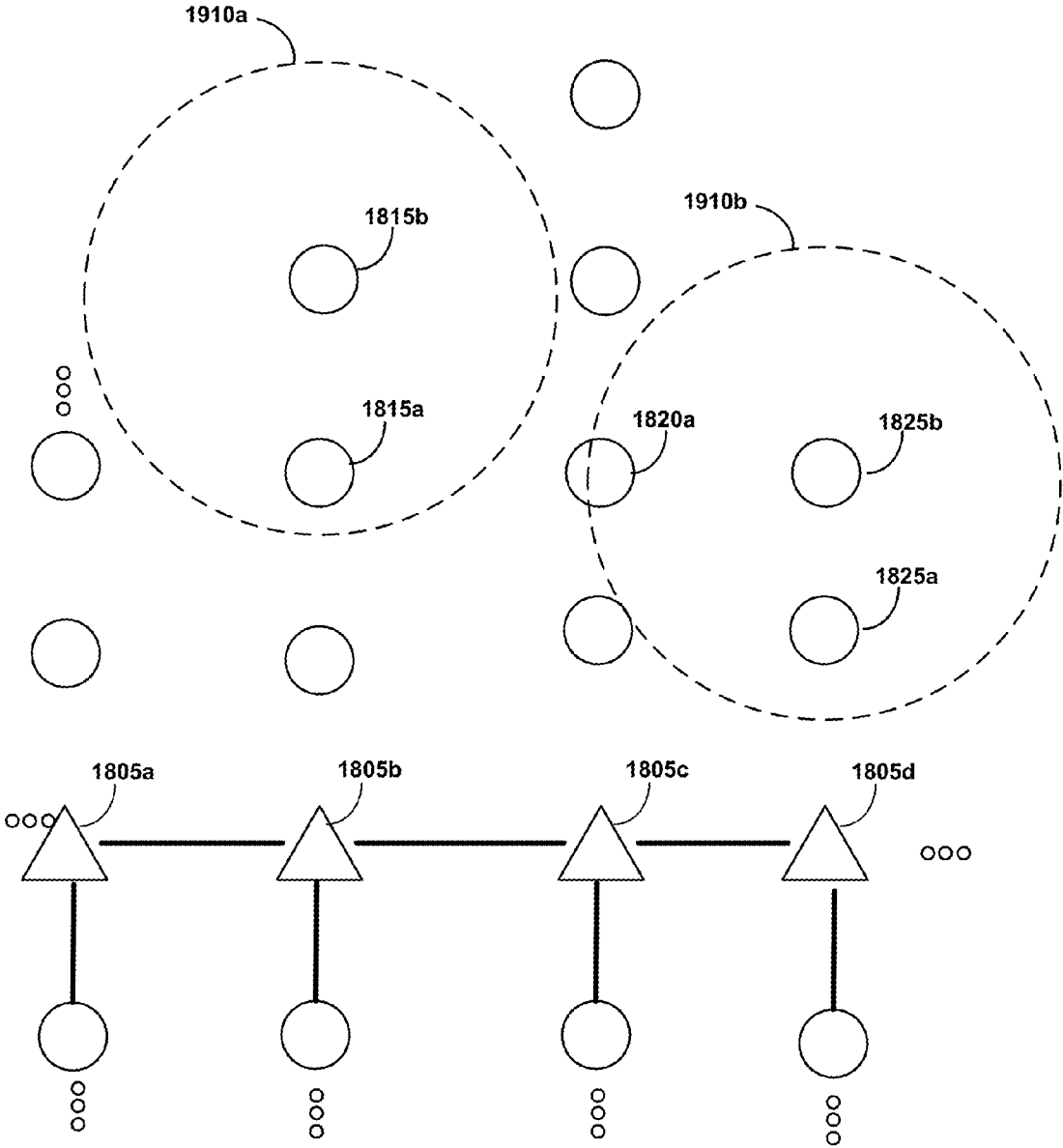


FIG. 19

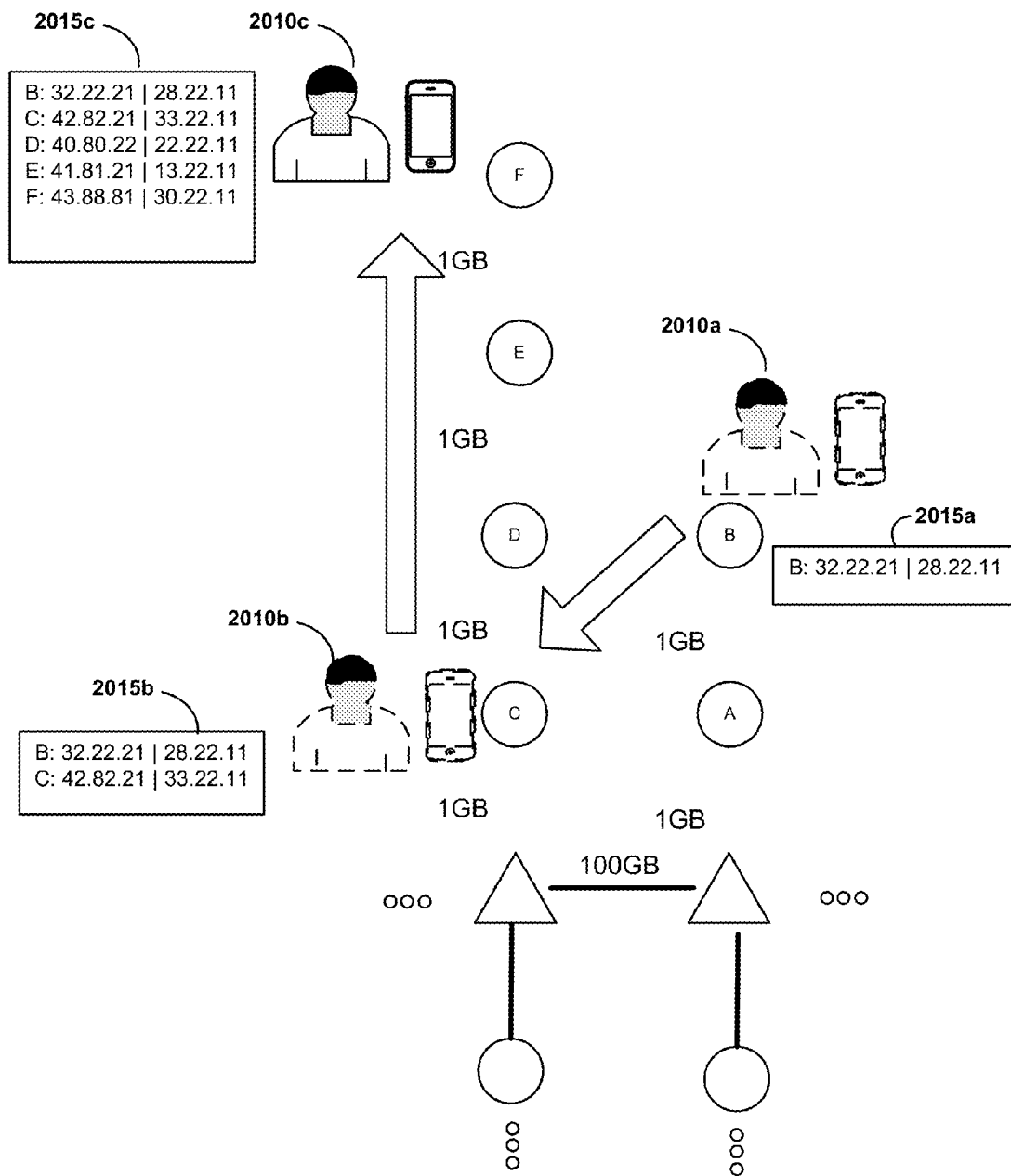


FIG. 20

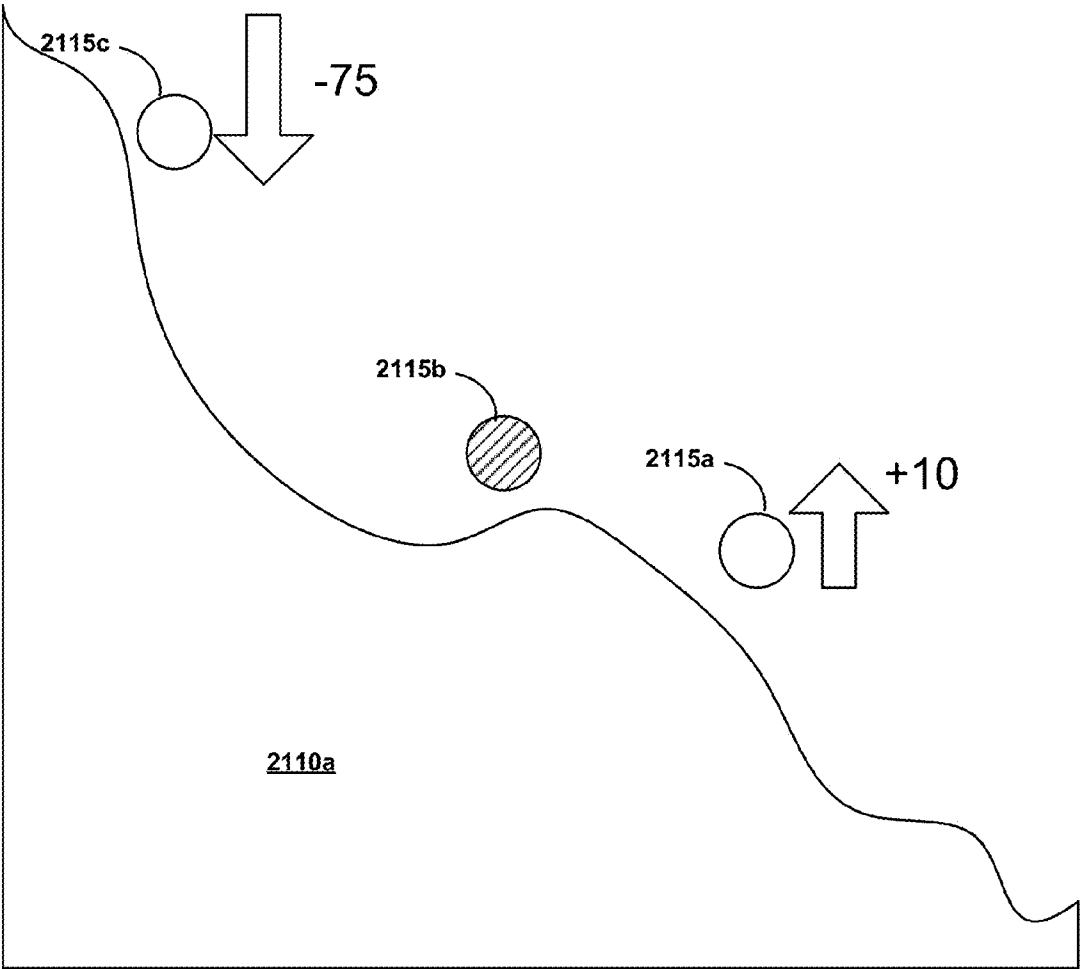


FIG. 21

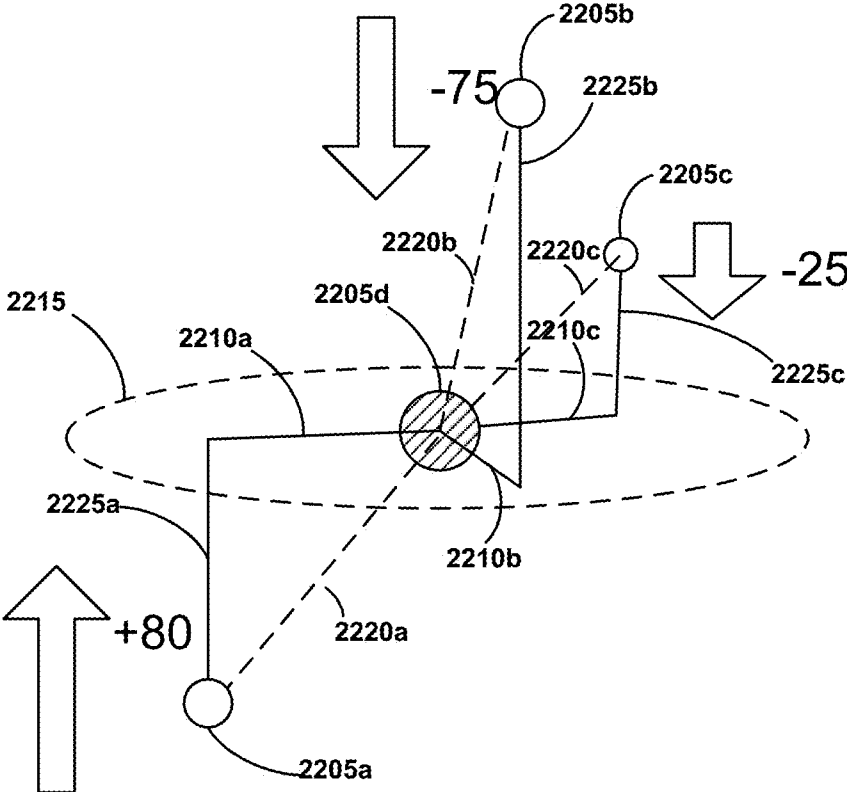


FIG. 22

2300

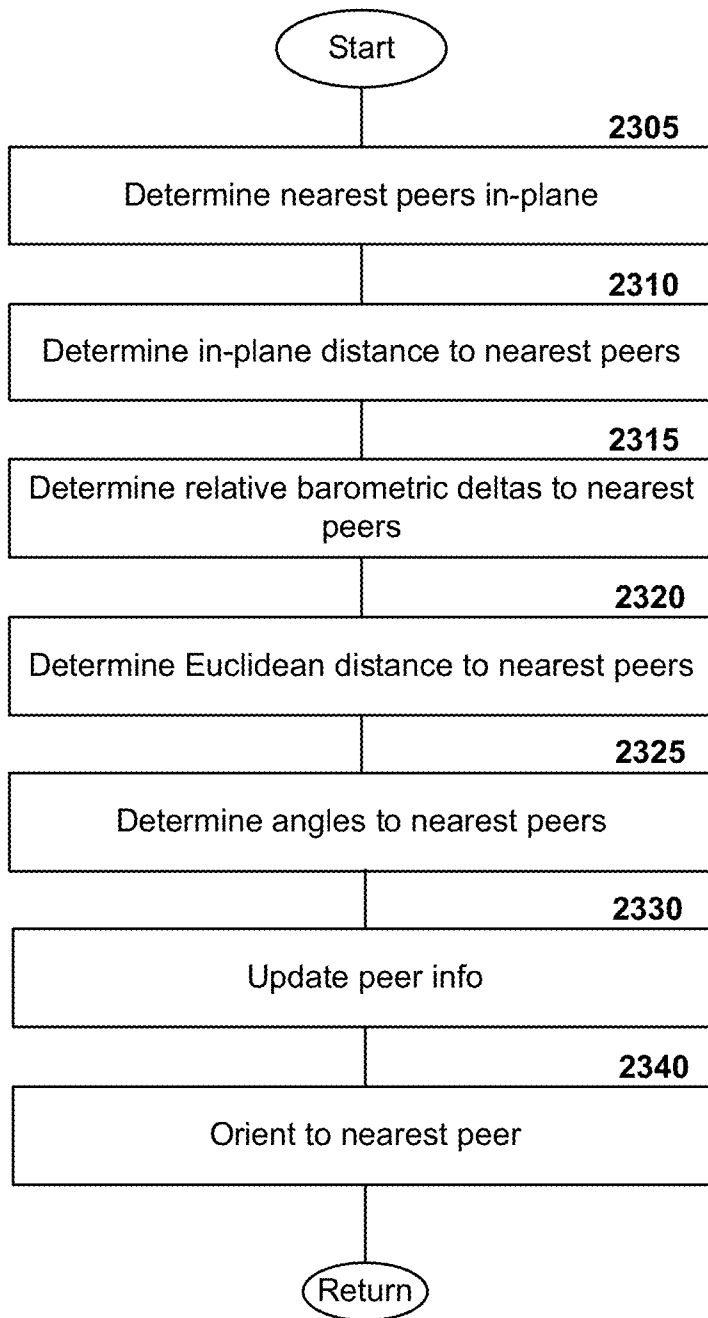


FIG. 23

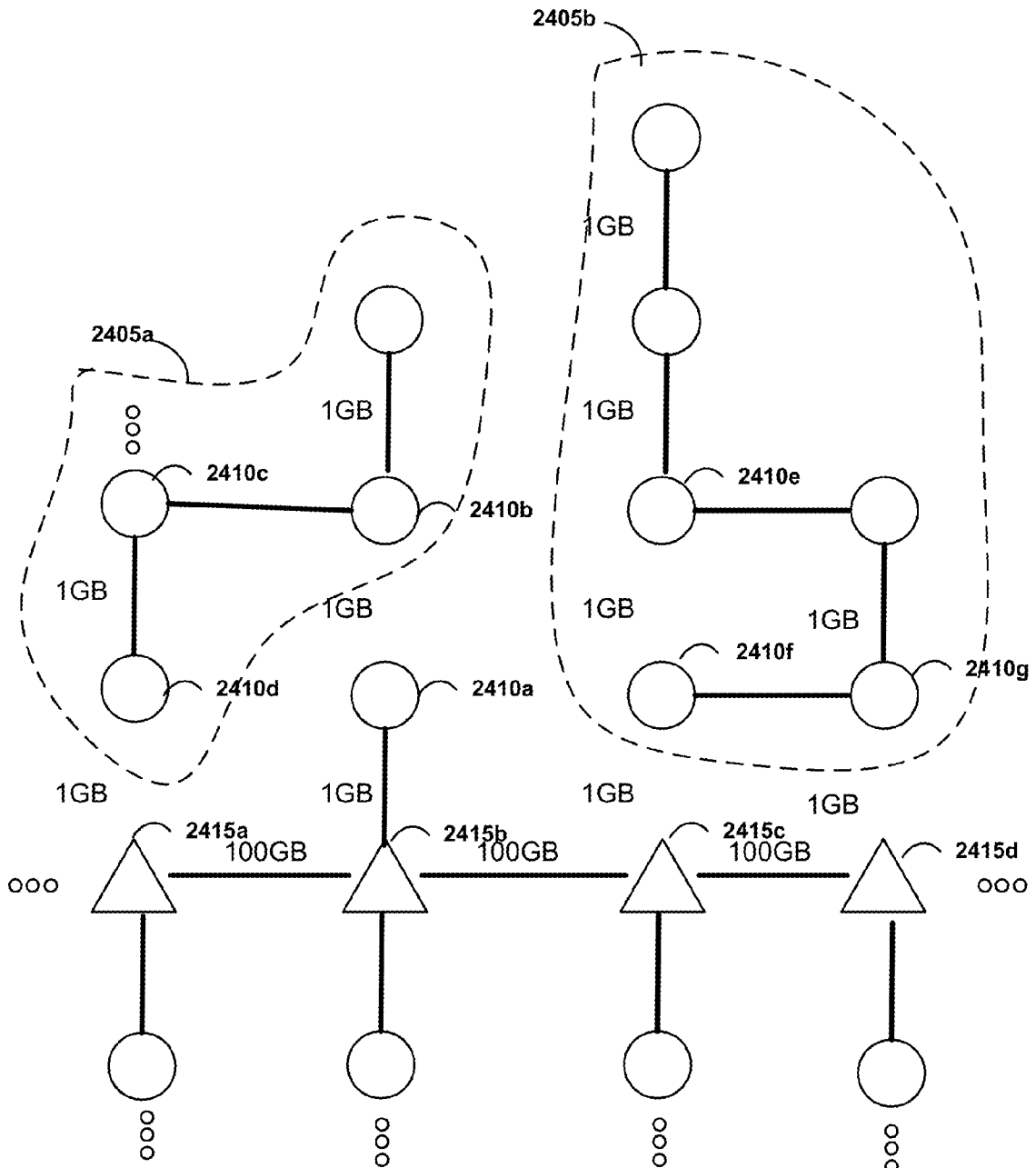


FIG. 24

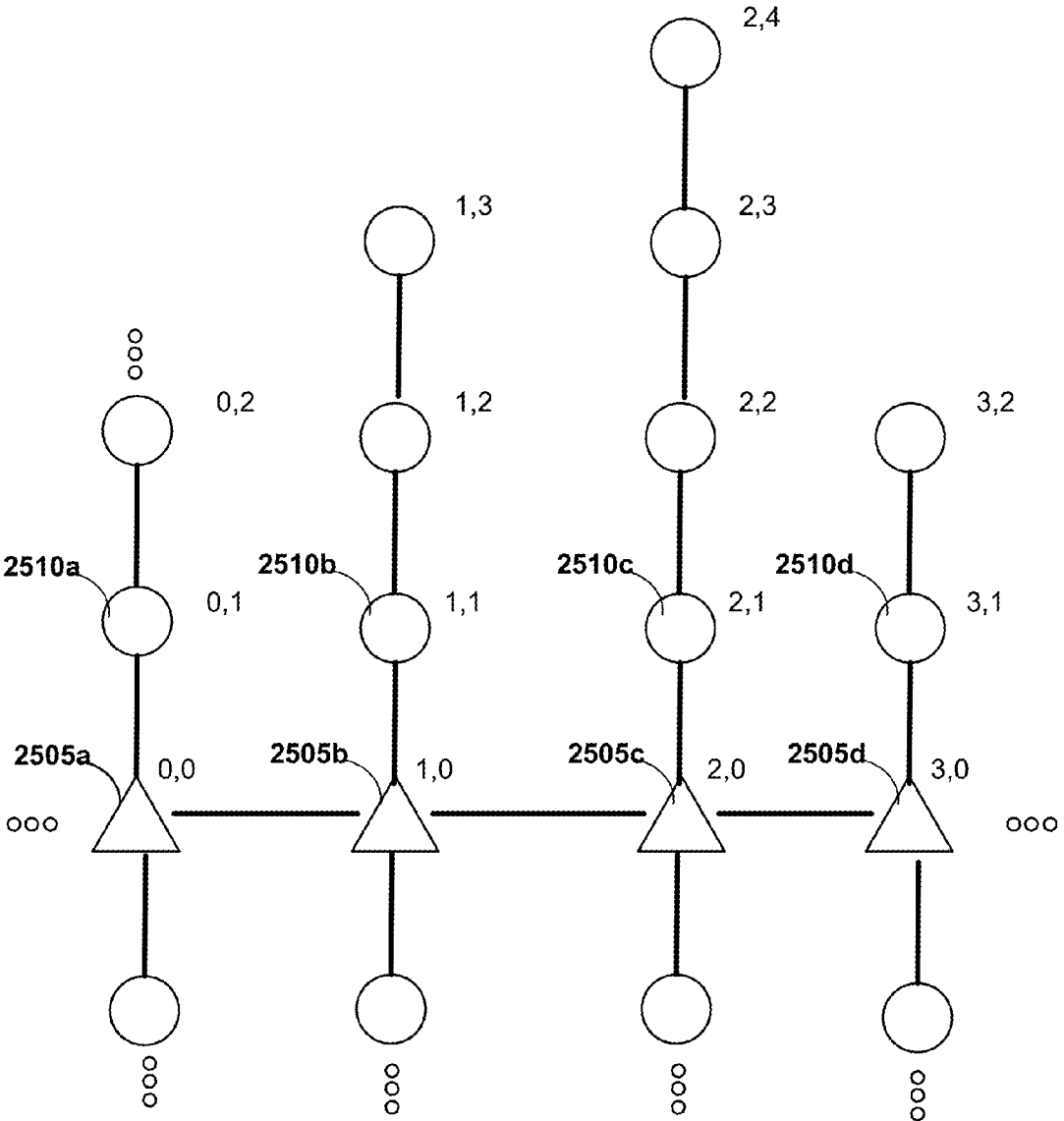


FIG. 25

2600

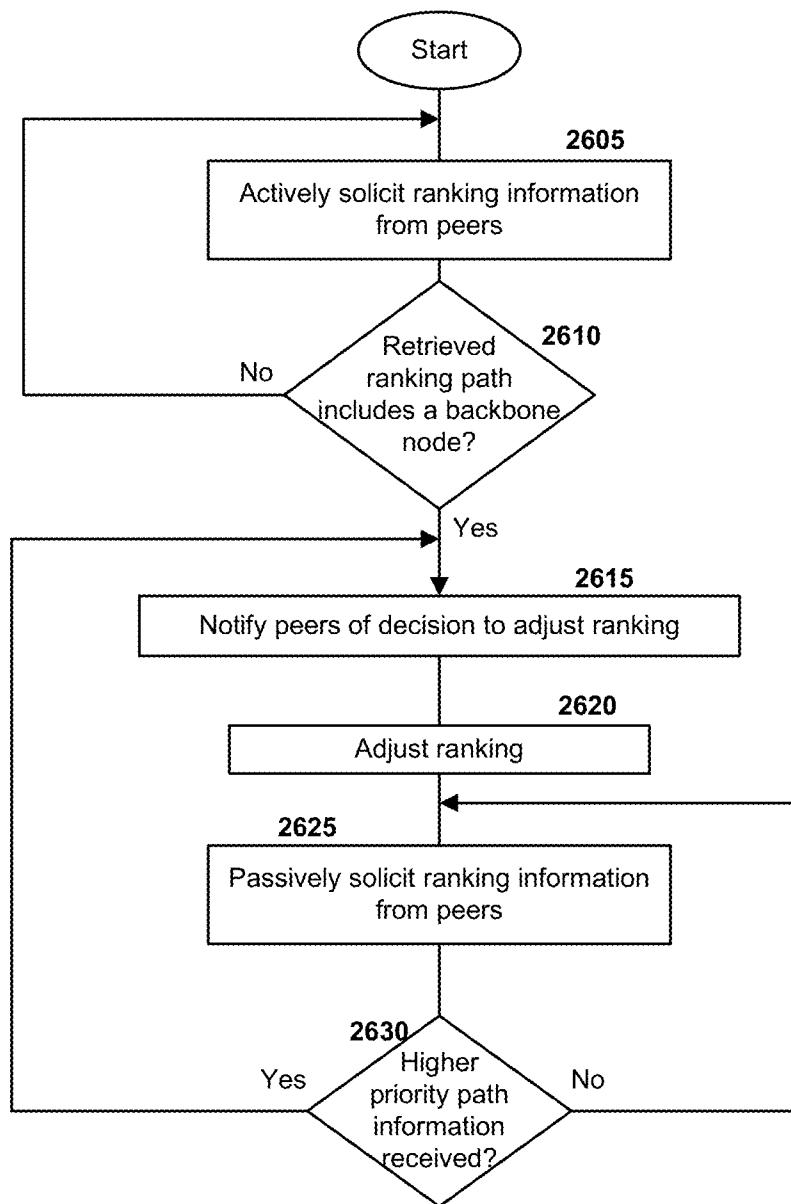


FIG. 26

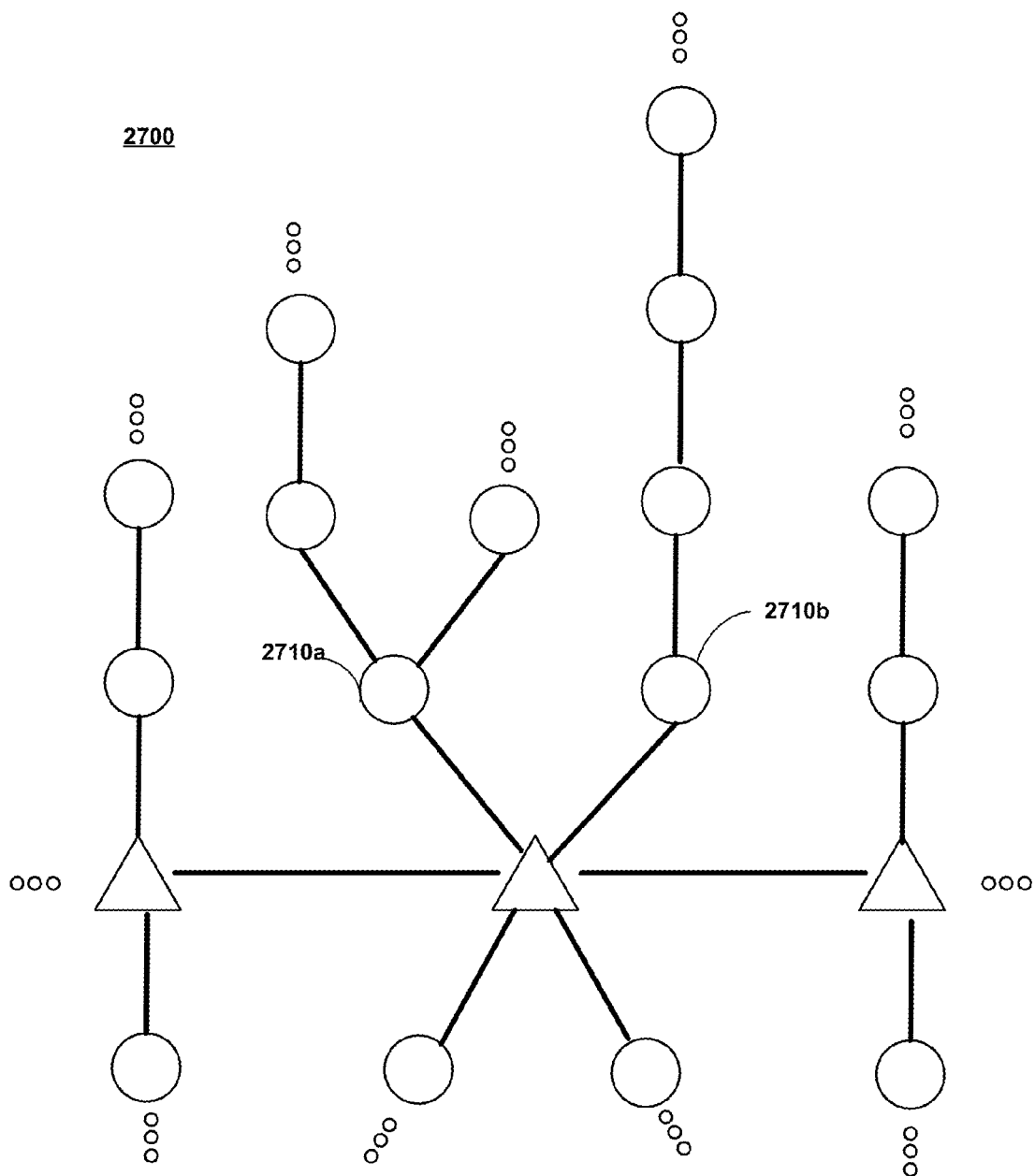


FIG. 27

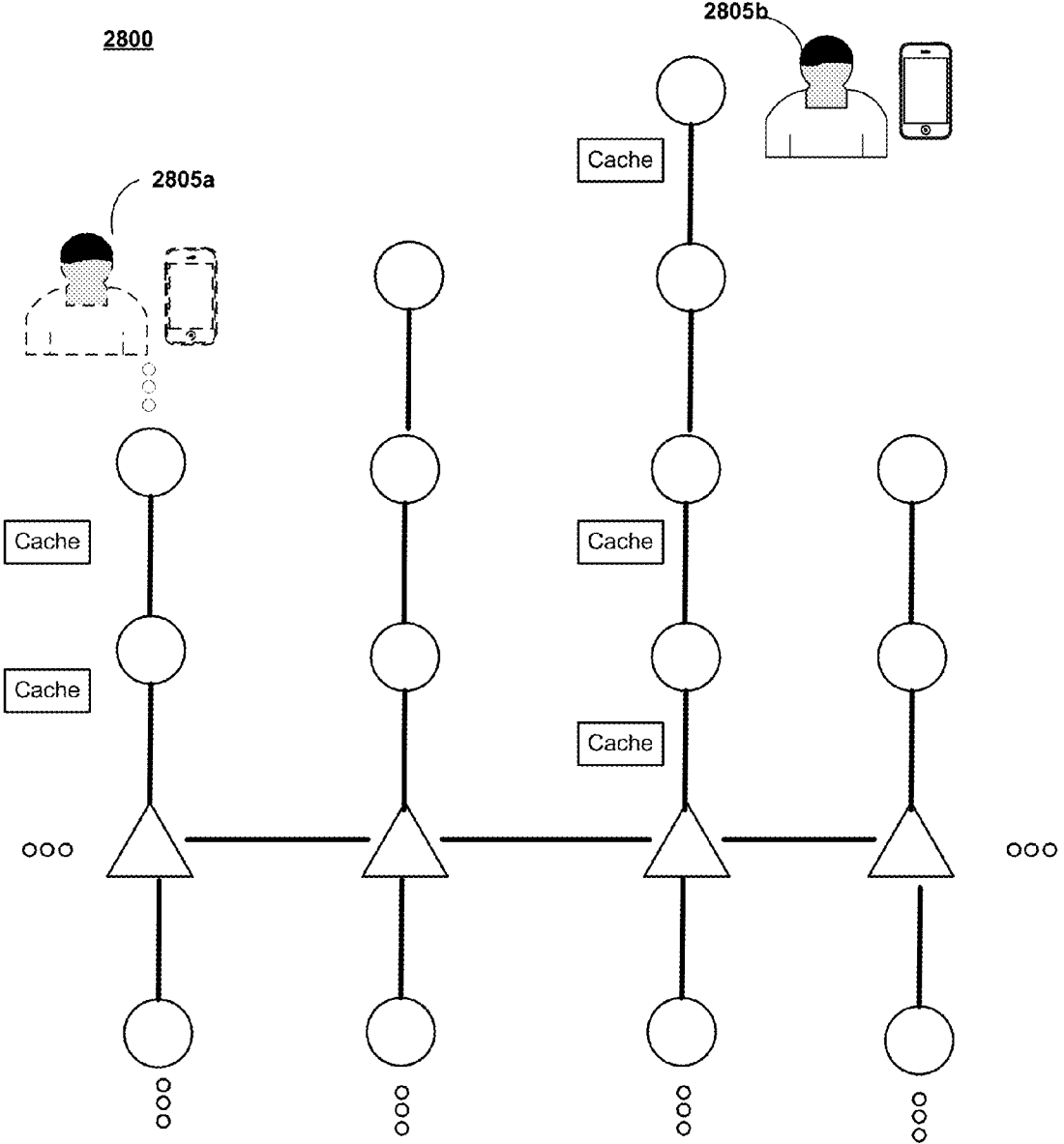


FIG. 28

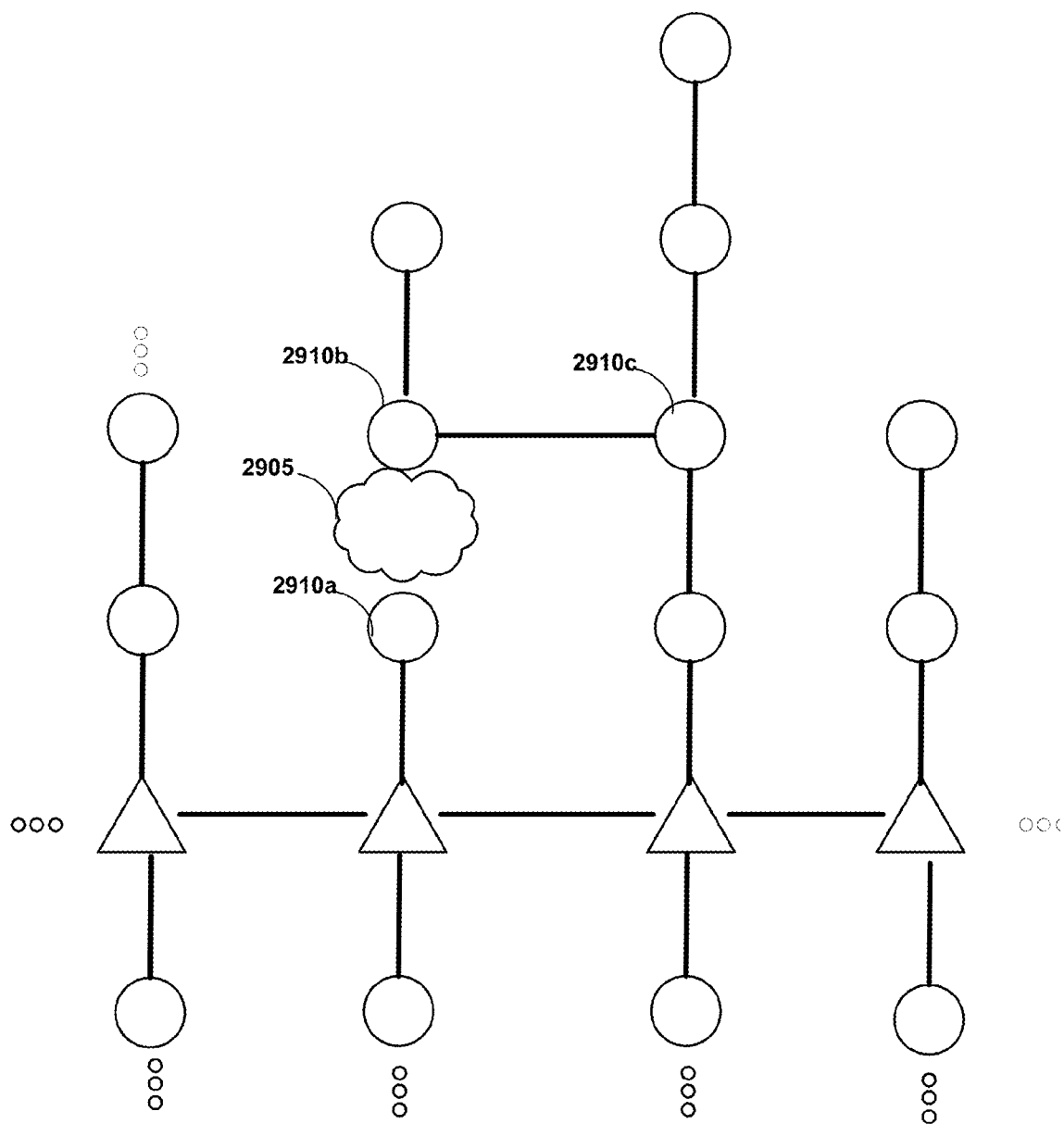


FIG. 29

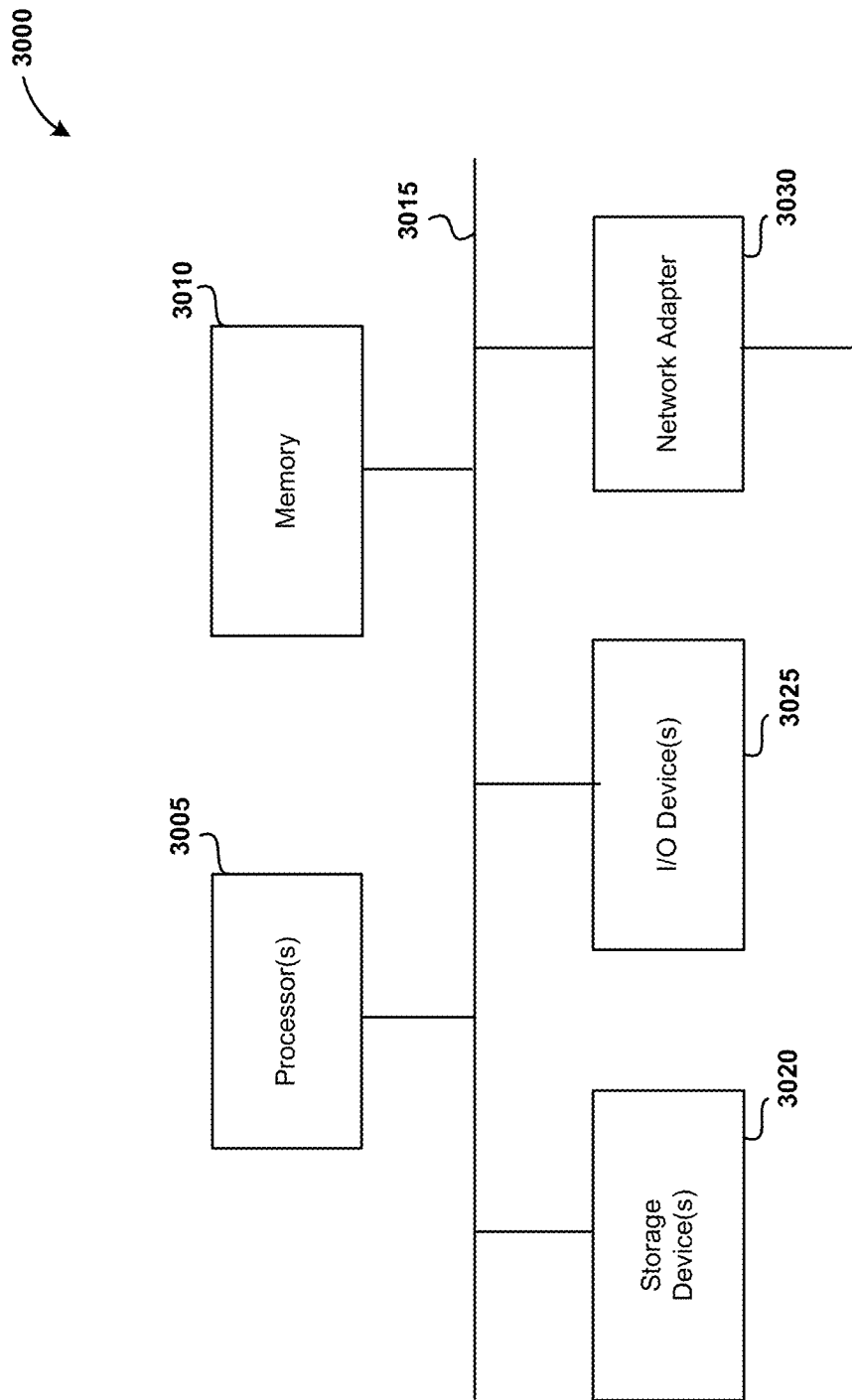


FIG. 30

DEPLOYING LINE-OF-SIGHT COMMUNICATION NETWORKS

TECHNICAL FIELD

[0001] The disclosed embodiments relate to deployment and operation of line-of-sight (LOS) networks, e.g., for providing wireless Internet access.

BACKGROUND

[0002] Modern society relies heavily upon the rapid dissemination of large amounts of information. Whether via the Internet or via community intranets, participation in the global community is regularly predicated upon network connectivity. Individuals and communities that cannot access these networks are at a considerable disadvantage as compared to their networked peers. Not only do disconnected communities lack access to information and services provided by the rest of the world community, but they also generally lack the infrastructure to improve intra-community communication as well.

[0003] While the need for Internet or local network access may be great in these communities, geographic and economic limitations may render typical delivery mechanisms unfeasible. Furthermore, these communities may lack the financial resources to support the introduction of high-bandwidth routers and access points provided by commercial conglomerates.

[0004] Accordingly, there exists a need for an economical method to introduce network access to communities in disparate geographic conditions.

BRIEF DESCRIPTION OF THE DRAWINGS

[0005] The techniques introduced here may be better understood by referring to the following Detailed Description in conjunction with the accompanying drawings, in which like reference numerals indicate identical or functionally similar elements:

[0006] FIG. 1 is an in-situ image of a deployed optical network as may occur in some embodiments;

[0007] FIG. 2 is a block diagram of some components in a node as may occur in some embodiments;

[0008] FIG. 3 is three-dimensional depiction of the line-of-sight angles and ranges relevant to a node as may occur in some embodiments;

[0009] FIG. 4 is a flow diagram depicting a very high-level example deployment and operation of a node network as may occur in some embodiments;

[0010] FIG. 5 is a flow diagram depicting operations in a node-placement-planning algorithm as may occur in some embodiments;

[0011] FIG. 6 is a top-down, two-dimensional depiction of the line-of-sight angles and ranges relevant to a node during the path planning algorithm as may occur in some embodiments;

[0012] FIG. 7 is an example iteration of a node-placement-process as may occur in some embodiments;

[0013] FIG. 8 is an example iteration of the node-placement-process of FIG. 7;

[0014] FIG. 9 is an example iteration of the node-placement-process of FIG. 7 depicting the effect of a holistic directional growth criterion as may occur in some embodiments;

[0015] FIG. 10 is an example iteration of the node-placement-process of FIG. 7 depicting the effect of a greedy directional growth criterion as may occur in some embodiments;

[0016] FIG. 11 is an example resultant path of the node-placement-process of FIG. 7 as may occur in some embodiments;

[0017] FIG. 12 is an example resultant path of the node-placement-process of FIG. 7 as may occur in some embodiments;

[0018] FIG. 13 is an example resultant path of the node-placement-process of FIG. 7 as may occur in some embodiments;

[0019] FIG. 14 is an example result of a coverage-driven growth criterion on a node-placement-process as may occur in some embodiments;

[0020] FIG. 15 is a flow diagram depicting a leaf generation process for a coverage-driven growth criterion in a node-placement-process as may occur in some embodiments;

[0021] FIG. 16 is an example result of a demand-driven growth criterion on a node-placement-process as may occur in some embodiments;

[0022] FIG. 17 is a flow diagram depicting a leaf generation process for a demand-driven growth criterion in a node-placement-process as may occur in some embodiments;

[0023] FIG. 18 is topological block diagram of node relations in a deployed Cartesian mesh following Discovery/Alignment and Association as may occur in some embodiments;

[0024] FIG. 19 is topological block diagram of node relations in a deployed Cartesian mesh prior to Discovery/Alignment as may occur in some embodiments;

[0025] FIG. 20 is topological block diagram depicting passive user-based information propagation during Discovery/Alignment in a deployed Cartesian mesh as may occur in some embodiments;

[0026] FIG. 21 is a cross-sectional perspective view of an incline upon which nodes are placed and relative barometric readings are taken as may occur in some embodiments;

[0027] FIG. 22 is a three-dimensional perspective view of several nodes and their barometric readings relative to a first node as may occur in some embodiments;

[0028] FIG. 23 is a flow diagram depicting a process for orienting peer-nodes during Alignment based upon their peers' barometric data as may occur in some embodiments;

[0029] FIG. 24 is topological block diagram depicting isolated formations following Discovery/Alignment and prior to Association as may occur in a deployed Cartesian mesh in some embodiments;

[0030] FIG. 25 is topological block diagram depicting an end ranking following Association as may occur in a deployed Cartesian mesh in some embodiments;

[0031] FIG. 26 is a flow diagram depicting a local process for updating a node ranking as may occur in some embodiments;

[0032] FIG. 27 is a topological block diagram depicting a Star-network following Discovery/Alignment as may occur in some embodiments;

[0033] FIG. 28 is a topological block diagram depicting a caching topology in a Cartesian-network as may occur in some embodiments;

[0034] FIG. 29 is a topological block diagram depicting a rerouting event in a Cartesian-network as may occur in some embodiments; and

[0035] FIG. 30 is a block diagram of a computer system as may be used to implement features of some of the embodiments.

[0036] The headings provided herein are for convenience only and do not necessarily affect the scope or meaning of the claimed embodiments. Further, the drawings have not necessarily been drawn to scale. For example, the dimensions of some of the elements in the figures may be expanded or reduced to help improve the understanding of the embodiments. Similarly, some components and/or operations may be separated into different blocks or combined into a single block for the purposes of discussion of some of the embodiments. Moreover, while the various embodiments are amenable to various modifications and alternative forms, specific embodiments have been shown by way of example in the drawings and are described in detail below. The intention, however, is not to limit the particular embodiments described. On the contrary, the embodiments are intended to cover all modifications, equivalents, and alternatives falling within the scope of the disclosed embodiments as defined by the appended claims.

DETAILED DESCRIPTION

General Description

[0037] Various examples of the disclosed techniques will now be described in further detail. The following description provides specific details for a thorough understanding and enabling description of these examples. One skilled in the relevant art will understand, however, that the techniques discussed herein may be practiced without many of these details. Likewise, one skilled in the relevant art will also understand that the techniques can include many other obvious features not described in detail herein. Additionally, some well-known structures or functions may not be shown or described in detail below, so as to avoid unnecessarily obscuring the relevant description.

[0038] The terminology used below is to be interpreted in its broadest reasonable manner, even though it is being used in conjunction with a detailed description of certain specific examples of the embodiments. Indeed, certain terms may even be emphasized below; however, any terminology intended to be interpreted in any restricted manner will be overtly and specifically defined as such in this section.

Network Overview

[0039] Various of the disclosed embodiments relate to line-of-sight (LOS), e.g., optical, based networks. Systems and methods are provided for determining where to place the network nodes in a geographic region, aligning the nodes with their peers, and then associating peers so as to achieve the desired network topology. Some of the disclosed embodiments may be used to provide Internet access to remote regions and communities. By combining local and holistic priorities at different stages of the network deployment, a robust and efficient LOS network may be formed.

[0040] FIG. 1 is an in-situ image of a deployed optical network 100 as may occur in some embodiments. A plurality of nodes 105a-c may be in local communication with one another via LOS connections 115a,b. Each node may provide network access 110a-c, e.g. via wireless WIFI access, to its local region. Some nodes may be connected to a backbone 125, such as a fiber backbone (though other backbones are possible), that may be connected to the Internet. While placed so as to provide a desired access to the population of a com-

munity, the nodes can also be situated so as to accommodate the presence of natural obstacles 135 and man-made obstacles 130.

Hardware

[0041] FIG. 2 is a block diagram of some components in a node 200 as may occur in some embodiments. Power module 205 may be any suitable connection to a power source, e.g., a connection to a land-based power source (a grid-based alternating current), to a solar cell, to a battery source, to a voltage difference in a natural medium, etc. Network access module 210 may be a component in the node 200 used to provide local network access. For example, network access module 210 may be a WIFI wireless access point, a wired Ethernet terminal, etc. Connection bay 215 may include a plurality of connection modules 215a-n for communication with peer nodes. Connection modules 215a-n need not be the same form of communication, e.g., they may be microwave, line-of-sight optical, laser-based, radio-frequency, directional antenna systems, hardline connections, etc. The connection modules 215a-n may have different bandwidths and communication rates. Connection modules 215a-n may include both transmission and reception components and may be associated with a same or different peer node. Some connection modules 215a-n may be specifically designed for communication with a backbone. Connection modules 215a-n may include individual or shared actuators for alignment and directional transmission/reception.

[0042] Location module 220 may include one or more components used for determining location and/or orientation, such as a GPS reception system, a compass, an altimeter, a pressure sensor, etc. The pressure sensor may be used to acquire relative barometric measurements as compared with peer nodes as described further herein. Memory module 230 may include one or more memory devices, which may be solid-state memories, hard disk memories, etc. A cache 235 may be used for storing user-requested information as discussed in greater detail herein. Peer topology information 240 may include a record of peer locations, their ranking relative to a backbone node, etc., for example as determined during Association, as discussed herein. Routing information 245 may include protocols for sending information via different peers based upon channel conditions, traffic load, weather conditions, network load, etc. Logic 250 may include operational logic to maintain connection modules 215a-n, to forward and redirect information to users, to generally maintain the operation of node 200, etc. One or more processors 255 may be used to run the logic 250. Though this example depicts a common memory-processor instruction architecture, one will readily recognize that the described operations may be implemented using other tools, e.g., Field-Programmable Gate Arrays (FPGAs). A user interface 260 may be included for an in-field operator or for users to interact with the node 200, e.g., to designate its mode of operation, to configure its position, to receive data, etc.

[0043] In some embodiments, the connection modules 215a-n may include a backhaul subsystem module. The backhaul subsystem may be designed to carry a large data rate from node to node and may share a fraction of the capacity at each node with the access subsystem. The backhaul subsystem link to neighboring nodes may be designed to carry large amounts of data capable of supplying many access subsystems. This may facilitate the chaining of many such nodes together. In some embodiments, the nodes are seldom

repositioned following deployment. There may be some small movement of a node due to buildings settling and temperature variation but larger movements may occur when a node is to be physically moved to another site, e.g., for environmental reasons.

[0044] The access module **210** may be designed to share connectivity with both mobile and fixed end user devices in the area immediately surrounding the node (and perhaps to users closer to this node than to other peer nodes). The access subsystem may use wide area coverage wireless technologies to connect with many end users in its vicinity. Rather than a physical fiber, the backhaul subsystem may utilize narrow beam communication systems (optical, RF with high gain antennas, etc.) to pass high data rates to neighboring nodes efficiently and to minimize communication interference between other backhaul nodes.

[0045] The narrow beam technologies used for the backhaul subsystem may include (but are not limited to), RF, millimeter wave, and optical. Beam divergences for the backhaul subsystem may be approximately 3-5 degrees for RF systems, 1-3 degrees for millimeter wave systems, and 0.05 to 0.5 degrees for optical systems, though these ranges are offered as examples and one will readily recognize that others are possible.

[0046] Building sway, building settling, temperature drift, etc. may affect the viability of these different ranges. Such changes induced on an aligned system may induce small changes of a fraction of a degree. In some embodiments, this motion may be handled with small field of view steering technologies or aligning the devices to the beam centers such that the movement is within the beam divergence angle. During the installation process the backhaul subsystem may need to search over an angular range of 180 degrees in the X-Y plane and 30 degrees in the Z axis to locate a nearby node to connect to.

[0047] FIG. 3 is three-dimensional depiction of the line-of-sight (LOS) angles and ranges relevant to a node **305** as may occur in some embodiments. Depending upon the actuator configuration a node **305** may be able to orient its LOS transmitter/receiver within an LOS region **335** having a range **345**. The node **305** may be able to rotate a full 360° about a vertical access (i.e., yaw axis). This region may extend from a plane **345** about a horizontal axis (i.e., pitch axis) to a maximum angle **320a** above the plane **340** and a maximum angle **320a** below the plane **340**. Regions **330a,b** may accordingly be excluded from the node **305**'s visibility at boundaries **315a,b**. These regions are not necessarily to scale and will change with various embodiments (e.g., the region **330a** may be a null region and the zenith accessible to the node **305**'s visibility in some embodiments). A radius **345** may depend upon the hardware of the node **305** and the transmission channel conditions (e.g., humidity, interference from other sources, etc.). A window **325** may reflect the actual region seen by the node **305** (multiple such windows may be present for different devices) at a given position along the range **345**. The window is here seen increasing in dimensions along the range as a consequence of the divergence factor. As the window **325** may be relatively narrow, accurate identification of neighboring peer node positions may be necessary if communication is to be established with them in a reasonable period. Absent such information, the node **305** may scan the window **325** across a region far from the peer node.

[0048] Note that the LOS ranges depicted herein may be unrelated to the wireless access ranges, radiofrequency, and/or microwave communication methods of other modules.

Deployment Overview

[0049] FIG. 4 is a flow diagram depicting a very high-level example deployment and operation of a node network as may occur in some embodiments. At block **405** the node placement may be determined in a simulated environment. During this stage, one or more planners may identify the best physical and logical topologies for the nodes in a given geographic and population context. Example aspects of this operation are discussed in greater detail herein, e.g., in the sections with heading "Node-Placement Planning".

[0050] At block **410** the nodes may be physically placed in the geographic region. A dedicated group of technicians may install the nodes, or the nodes may be established in an ad-hoc manner by members of the community. For example, nodes may be mailed to participating community members with instructions for their installation.

[0051] At block **415** the nodes may engage in Discovery and Alignment procedures to locate and orient towards their peers. During this stage, the nodes may determine the relative physical location of their nearest peers and the orientations necessary to perform line-of-sight communication with one or more of those peers. Example aspects of this operation are discussed in greater detail herein, e.g., in the sections with heading "Discovery and Alignment".

[0052] At block **420** the nodes may engage in Association to determine their topological relation relative a backbone. During this stage, the nodes may determine which of their neighbors they should form LOS connections with so as to acquire access to a network backbone. The backbone may be a connection to the Internet or to a subnetwork. These formations may prevent node subgroups from being isolated from the backbone connection. Example aspects of this operation are discussed in greater detail herein, e.g., in the sections with heading "Association".

[0053] At block **425** the nodes may perform various steady-state operations, including, e.g., routing, network management, data caching, etc.

Node-Placement Planning

[0054] FIG. 5 is a flow diagram depicting operations in a node-placement-planning algorithm as may occur in some embodiments. At block **505**, the system may receive various target constraints. For example, the planners of the network may specify the maximum number of nodes available, the desired coverage per region, prioritization of certain communities or areas, the iteration parameters discussed in greater detail herein, etc.

[0055] At block **510**, the particular, real-world information for a target region may be provided. This information may include the population distribution of the target region (averaged, or for different temporal periods), the obstacles (natural and man-made) in the region, the elevation of portions of the region, the location of a backbone connection, etc.

[0056] At block **515**, the system may select the next backbone connection to be considered. For example, a plurality of connection points may be specified along the backbone at regular intervals. Each point may afford various benefits and/or drawbacks. For simplicity of explanation, consideration of a single backbone connection at a time is discussed here, but

one will readily recognize that the discussed methods may be extended to approaches in some embodiments where multiple backbone connections are considered simultaneously.

[0057] At block 520, the system may perform an iteration among the leaves of the presently considered backbone. Initially, there may be only a single leaf (the backbone connections), but proposed peers will be generated during this step based on various of the provided parameters. These proposed peers may themselves serve as leaves during a subsequent iteration to generate additional peers/leaves.

[0058] At block 525, the system may determine if a stop condition has been reached. For example, where each of the contemplated paths has exhausted the maximum available number of nodes, the system may conclude the generation process. Similarly, if a desired level of coverage were specified and a path provides this coverage, leaves may no longer be generated for the path. One will recognize that the system may continue generating leaves for those nodes associated with paths that have not yet met a stop condition, even though other paths may have met the condition. In some embodiments, local minima may be avoided by ignoring a stop condition, but making a record of it having been met for a given path (this may generate a new path in itself, e.g., a subpath of the larger path). For example, this may prevent a path that satisfies a lower prioritized stop condition (e.g., preferred cost) from preventing the generation of path satisfying a higher prioritized stop condition (e.g., desired coverage achieved).

[0059] At block 530, the system may determine if all the backbone positions have been considered. If not, the system may generate a new series of nodes and paths for the next backbone connection. These may be separately considered from those generated in the previous backbone node iteration, or the synergies between the paths may be considered below at block 535.

[0060] At block 535, the system may identify and record paths based upon the target constraints. For example, whereas the constraints may have previously dictated that no further leaves be generated, the constraints are here used to “prune” the possible connections to identify those paths associated with the highest metric values. For example, for a tree with a branching factor of 3, wherein 5 iterations were performed, there may be as many as 364 nodes ($1+3+9+27+81+243$) to consider (this is merely an example and many more than 5 iterations may be performed, and a different branching factor than 3 may be used, in some embodiments). Of these 364 nodes, 243 nodes may be leaves (the remaining nodes being intermediate nodes to the backbone). For each of these 243 leaves, there may be one or more possible paths (based upon the LOS limitations for neighboring nodes) to the backbone. There may also be many subpaths from the intermediate nodes to the backbone. Metric determinations based on the constraints (e.g., cost, coverage achieved, difficulty of installation, etc.) may be determined for each of these paths.

[0061] At block 540, the system may determine if the desired number of paths has been determined. If not, additional paths and their corresponding metrics may be determined. Once the desired number of paths has been identified, at block 545, the system and/or human planner may select one or more paths associated with preferred metric values. The planner may adjust the node positions manually at block 550 to generate the final node topology for in-situ installation.

Node-Placement Planning—Iteration Leaf Representation

[0062] FIG. 6 is a top-down, two-dimensional depiction of the line-of-sight angles and ranges relevant to a node during the path planning algorithm as may occur in some embodiments. Although a data structure reflecting these variables may appear in the planning system, the two-dimensional representation of FIG. 6 is merely to facilitate explanation, and one will readily recognize that the system anticipates the three-dimensional structure of FIG. 3 when assessing peer-to-peer interactions.

[0063] During an iteration of the peer generation aspect of the placement process, the system may consider a previously-placed node 605 and its child node 610, which is presently a leaf considered in this iteration. Here, the LOS ranges of the nodes are depicted by range circles 615 and 620, although as discussed previously, the system may consider the three-dimensional character of the ranges and limitations imposed by terrain, hardware, etc. Child node 610 was previously placed at the periphery of node 605’s LOS range. To now place one or more leaves relative to child node 610, the system may consider a priority direction 640 and span 630 with limits 625a and 625b. The span need not be along a circle, but may be a line path along the periphery of whatever form child node 610’s visibility assumes. Candidate child nodes may be placed along this span 630 in accordance with a desired branching factor. Priority direction 640 may determine the width of span 630 (e.g., based on the distance to a weighted centroid, the variance about the weighted centroid, local topology around the priority direction, etc.) and the limits 625a and 625b and be generated based upon one or more constraints. For example, where the system seeks to service a maximum number of communities, the system may identify centroids in the population density, weight the centroids by priority and then determine the priority direction 640 based upon the relationship between the position of child node 640 and the weighted average (in this example, the weighted average would be in the direction of the top of the page).

Node-Placement Planning—Example Iterations

[0064] FIG. 7 is an example iteration of a node-placement-process as may occur in some embodiments. Population density data may have indicated that community members frequent regions 705a-e. Some of these regions 705b-e, e.g., an office complex or downtown center, may be grouped closely together. Other regions 705a may be isolated, e.g., depicting isolated villages, service stations, etc. Elevation data may indicate that a large mountain 710 is present in the region.

[0065] Given this particular, real-world information for the target, the system may seek to identify an optimal node placement providing network access to the various regions, beginning from a backbone 730. A connection point 725 may serve as an initial node in the contemplated network. In this example a first node 715a, has been placed within optical range of the connection point 725. In this simplified example, the system has identified the priority direction 740, e.g., based upon a desire to service the community reflected by regions 705b-e. For each leaf generation iteration, the system may also iterate across different constraint profiles to consider different priority directions 740 (though, for simplicity, only one direction is considered here—considering multiple priority directions at each iteration may generate many more than the 364 nodes presented in the example above).

[0066] FIG. 8 is an example iteration of the node-placement-process of FIG. 7. Here, for a branching factor of 3, the system has placed three new leaf nodes **815a-c**. As indicated, each of these leaf nodes **815a-c** offer different advantages/disadvantages. Node **815a** may ultimately provide access to region **705a** at lower cost than the other options. Node **815b** however, may provide the most direct path the regions **705b-e**. Node **815c** may avoid certain limitations of elevation, but moves farther from the populated regions.

[0067] FIG. 9 is an example iteration of the node-placement-process of FIG. 7 depicting effects of a holistic directional growth criterion as may occur in some embodiments. For example, leaves have been generated for each of node **815a-c** in accordance with the constraints and consequent priority directions **930a-c**. The priority directions **930a-c** need not be the same (though they are in this example) and may vary in a “greedy manner” depending upon how the constraints interpret the current node’s situation. In this example, the new leaf nodes **915a-c**, **920a-c**, **925a-c** have been generated pursuant to a “holistic” priority to reach the largest serviceable population, i.e., regions **705b-e**.

[0068] FIG. 10 is an example iteration of the node-placement-process of FIG. 7 depicting effects of a greedy directional growth criterion as may occur in some embodiments. In contrast to the preceding example, the priority directions **1030a-c** have been reevaluated locally for each node **815a-c**. Here, node **815a**’s potential to reach region **705a** has predominated the other constraints/priorities and the priority direction **1030a** adjusted accordingly. Similarly, node **815b**’s potential to reach regions **705b-e** and/or its ability to reach a higher elevation (and possibly children with greater LOS range) has predominated the other constraints/priorities. Accordingly, priority direction **1030b** has been adjusted. In some instances, the rules governing creation of the priority direction may consider the presence of other nodes and priority directions. For example, priority direction **1030c** may be generated because the region to the bottom right remains unexplored by the other paths. Weights corresponding to different priorities may be adjusted such that the priority directions and consequent leaves generated with each iteration provide a desirable diversity of path options for consideration.

[0069] FIG. 11 is an example resultant path of the node-placement-process of FIG. 7 as may occur in some embodiments. Node placement may continue until a stop condition is reached as discussed herein. The system may then identify all the viable paths among the placed nodes and then assign them appropriate metrics. For example, FIG. 11 depicts a path from the backbone via nodes **1130a-j** to regions **705b-e**. This path may receive a relatively lower-valued metric as it requires a considerable number of nodes and fails to service the region **705a**.

[0070] FIG. 12 is an example resultant path of the node-placement-process of FIG. 7 as may occur in some embodiments. This example path may receive a higher relative metric value than the example of FIG. 11 as the nodes **1230a-h** service all the regions **705a-e**. However, this path still requires a rather large number of nodes.

[0071] FIG. 13 is an example resultant path of the node-placement-process of FIG. 7 as may occur in some embodiments. This example demonstrates that pruning may not only remove nodes outside the considered path, but may remove nodes within a considered path, if they are deemed irrelevant. For example, the system has discovered that placement of a

node **1330a** atop the mountain **710** permits it extend its LOS range considerably. In fact, strategically placed periphery nodes **1330b** and **1330c** permit the network to service each of regions **705a-e** with many fewer nodes than the examples of FIGS. 11 and 12.

[0072] One will recognize that the simplistic circle representing the LOS range of node **715a** has been used here merely to facilitate understanding of the more limited LOS options at the lower elevation, and is not depicted as extending reciprocally to node **1330a** atop the mountain in any of FIGS. 7-13 despite the reciprocal LOS regions of nodes **715a** and **1330a** (reciprocal overlaps for nodes **1330b** and **1330c** with node **1330a** also are not depicted). Indeed, in an implemented embodiment the LOS regions associated with each node may be complicated three-dimensional structures, rather than these simple 2D circles. The planning system may determine that the LOS region about a node is a “blob”, rather than a portion of a geometric solid (such as a hemisphere) as a consequence of the local terrain. Absent terrain or weather considerations, however, the LOS region may resemble a hemisphere (or even as a sphere missing some region in its lower hemisphere, e.g., as may be the case for node **1330a** atop the mountain **710**). In the example of FIG. 13, however, the mountain would subtract a portion of the hemisphere LOS region about node **715a**. However, the remaining portion of node **715a**’s LOS region’s hemisphere would still extend to the top of the mountain **710** so as to reach node **1330a**. Thus the planning system may initially assume the maximum possible dimensions of LOS region **335**, and then “carve out” local obstructions, or reduce the range **345** based on aggregate conditions (e.g., regions with consistently high humidity).

[0073] Accordingly, where these descriptive examples discuss placing candidate nodes along a span **630**, one will understand that some embodiments will place candidate nodes where the LOS region of the node in consideration intersects the ground plane. These points of intersection may be limited to an angle range corresponding to the span **630**. For very complicated LOS region’s the span **630** may be represented as a line path along the considered node’s LOS region’s intersection with the ground plane, rather than as an angle. The line path may be selected such that its center point coincides with a line extending from the considered node outward in the priority direction.

[0074] At each iteration, candidate nodes may be placed based upon, e.g.: the population centroids; environmental factors; permissions of land owners; power availability (solar, grid connections, etc.); access strength of neighbor nodes. Metric evaluations may consider similar, or the same, factors.

Node-Placement Planning—Coverage-Driven

[0075] FIG. 14 is an example result of a coverage-driven growth criterion on a node-placement-process as may occur in some embodiments. In some embodiments, the planner may specify that “coverage” is to take priority over other factors when selecting priority directions. Accordingly, the system may generate node placements and select paths that provide maximum coverage as depicted in FIG. 14.

[0076] FIG. 15 is a flow diagram depicting a leaf generation process for a coverage-driven growth criterion in a node-placement-process as may occur in some embodiments. At block **1505** the system may determine the centroids of the uncovered regions (e.g., regions not yet being serviced). For example, the regions may be construed as a Voronoi diagram,

the centroids as the centers of the respective Voronoi region (generated, e.g., following a K-means clustering). At block **1510**, the system may identify the direction to the closest and/or largest centroid for a particular leaf node under consideration. At block **1515** the system may determine the number of leaves to generate (e.g., the branching factor may vary depending upon the priority). At block **1520** the system may determine the leaf spread and at block **1525** the system may generate the new leaves.

Node-Placement Planning—Demand-Driven

[0077] FIG. **16** is an example result of a demand-driven growth criterion on a node-placement-process as may occur in some embodiments. In some embodiments, the planner may specify that “demand” is to take priority over other factors when selecting priority directions. Accordingly, the system may generate node placements and select paths that service the maximum number of individuals.

[0078] FIG. **17** is a flow diagram depicting a leaf generation process for a demand-driven growth criterion in a node-placement-process as may occur in some embodiments. At block **1705**, the system may determine the distance to population centroids. For example, the populations may again be grouped based upon, e.g., a K-means or similar grouping method. At block **1710**, the system may identify the direction to the nearest/largest population centroid for a leaf node under consideration. At block **1715**, the system may determine the number of leaves to generate (e.g., the branching factor may vary depending upon the priority). At block **1720** the system may determine the leaf spread and at block **1725** the system may generate the new leaves.

Discovery and Alignment

[0079] After the planning phase has been completed, the nodes may be physically placed in the region at their determined positions. Following placement, the nodes may then locate their peers and form appropriate connections to achieve the desired level of service identified in the planning stage. The identification of neighboring peers is generally referred to as “Discovery” herein, the orientation to a peer as “Alignment”, and the formation (via the first or subsequent orientations) of appropriate connections as determined during planning as “Association”. For purposes of simplifying explanation, the following discussion of “Alignment”, “Discovery” and “Association” will generally be with reference to a Cartesian layout, though one will readily recognize that his need not be the case and that other layouts may occur (e.g., a “Star” network as discussed herein). Different layouts may be generated as a result of the planning phase discussed above.

[0080] FIG. **18** is topological block diagram of node relations in a deployed Cartesian mesh following Discovery, Alignment, and Association, as may occur in some embodiments. Each of the columns may have been generated from a planning analysis beginning at a respective backbone connection. For example, the column comprising nodes **1815a-c** may result from planning iterations beginning at backbone connections **1805b**. As contemplated in some embodiments, and depicted in the above example, there may be 3 types of backhaul hardware: Fiber input (the connection of the network to the trunk); high speed hardware (e.g., 100 GB); and Regular speed (e.g., 1 GB).

[0081] FIG. **19** is topological block diagram of node relations in a deployed Cartesian mesh prior to Discovery/Alignment as may occur in some embodiments.

[0082] While FIG. **18** generally refers to the logical relation between nodes (i.e., their routing connections between one another) rather than their geographic location, FIG. **19** depicts ranges **1910a** and **1910b** reflecting the LOS for nodes **1815b** and **1825b**. During “Discovery”, the node **1815b** should recognize that the peer **1815a** is within LOS range based upon their respective locations. Similarly, the node **1825b** may recognize that each of peer nodes **1820a** and **1825a** are within LOS range. As there are multiple alternatives for node **1825b**, during Alignment node **1825b** may form a default connection with either (or in some embodiments, both) of nodes **1820a** and **1825a**. These default connections may be refined (e.g., supplemented or removed) subsequently during Association so as to achieve a desired connection with a backbone node.

Discovery—Passive User Propagation

[0083] In some embodiments, the nodes may determine their location information actively, e.g., by querying a GPS system or receiving coordinates from a technician on-site. In some embodiments, the installing technician may take an image of the node following installation, including one or two landmarks in the image. These landmarks may then be cross-referenced with database images to infer the location of the node. Some embodiments may combine various of these disclosed techniques to infer more accurate aggregate readings.

[0084] In some embodiments, each node may also rely (in lieu of, in addition to, or in complementation with the other techniques) on the passive transfer of information by users between its peers. For example, FIG. **20** is topological block diagram depicting passive user-based information propagation during Discovery in a deployed Cartesian mesh as may occur in some embodiments. A user with a mobile device may move from position **2010a** to position **2010b** and then to position **2010c**. Following installation, each of the nodes A-F may have local network access activated (e.g., WIFI) even though they are not yet in communication with a backbone connection. Accordingly as the user passes between the different nodes the user’s mobile communication device may associate with each of the nodes. For example, the user may first pass node B which recognizes its GPS position as being “32.22.21|28.22.11” (node B may infer these coordinates from the user device’s GPS coordinates). The mobile communication device may be running an application or otherwise be able to store this information locally in its memory in a location log **2015a**. When the user arrives as position **2010b** the mobile device may associate (e.g., form an 802.11 association) with Node C. The GPS positions values in this example are provided merely to facilitate understanding and do not reflect values that might actually be used in real-world implementations of embodiments.

[0085] Node C may pull the position log **2015a** from the mobile device, make its own internal record of the position of Node B, and supplement the user’s mobile device location log **2015b** with its own location information, as well as any location not already present that it previously acquired. For example, had Node C previously encountered a user who had passed Node A, the location information for Node A would be included in the location log **2015b**. By the time the user has reached position **2010c**, the user has received and provided location information from and to each of Nodes D, E, and F.

[0086] Thus the user/subscribers may initially be given membership (802.11 authentication, etc.) to all of the node access points. For example, in a WIFI system this may be accomplished by providing a common SSID/password or by providing open access. As each user passes by an unconfigured node the access point subsystem sends a message to the user. The message may, e.g., contain the following information: the MAC address of the node (or other unique identifier); GPS coordinates of the node; Altimeter data from the node; the hardware types of the various node communication systems; and association information for the node (e.g., whether it is in communication with a backbone node as preferred by the planning process). The user device may store this information and subsequently convey it to a future encountered node.

[0087] By this mechanism, people randomly moving about may carry the locations of the nodes to the other nodes. Eventually, each node may have a complete list of all neighboring nodes.

Alignment—LOS Search Variations

[0088] In some embodiments, during Alignment the node may perform a random search with narrow beams, e.g., a small window **325**. In these embodiments, the node may use a step size of one half the beam width (e.g., width of the window **325**) and a dwell-time at least twice the time to step between two angles. For example, a beam steering system could take 5 ms to switch between two positions and dwell for 10 ms at each position. In the case of an RF beam width of 4 degrees, an angular step size of 2 degrees may be used. Each node would then search within $90 \times 15 = 1350$ steps in this example. For the node to detect a neighboring node in this example, both narrow beams may need to align which would take 1.82 million steps. With each step taking 15 ms the total time to align a pair of nodes may take 7.6 hours. A millimeter wave system with a 2 degree beam width and a step size of 1 degree may instead allow each node would search through 5400 steps. Detection would take 29.1 million steps, which would take 121 hours.

[0089] As another example, an optical system with a beam width of 0.2 degrees with a 0.1 degree step size would require each node to search through 540,000 steps. This alignment may take 291 billion steps and 138 years. The narrow beam random search approach is therefore generally considered herein for embodiments having wider beam widths.

[0090] Some embodiments employ random searches with wider beams (e.g., larger window **325**). For example, some node embodiments use a separate signal with a wider beam for Alignment, but then use a narrower beam with higher speed data during normal operation. This wider beam signal could be used to narrow the search area for the narrow beam to its beam width.

[0091] In some embodiments, an omnidirectional receive antenna/sensor or omnidirectional transmit antenna/source may be connected to the node. This omnidirectional device may reduce the number of search steps of each node to the square root of the set time as it would not require that each node have exactly determined its relative alignment with its peer for the two to recognize one another.

[0092] Some embodiments implement a GPS-assisted search that may employ additional long-range wide area wireless technology. Each node may be fitted with an altimeter (e.g., using the barometric approach described herein) and GPS receiver to determine its position in space. The

nodes may then share this information with neighboring peers to aid in alignment. An additional omnidirectional radio may also be used to share the information. The frequency and transmit power of this radio may be chosen to allow the signal to adequately reach the nearby nodes (e.g., as determined during the planning phase described above). Collision avoidance techniques may be performed and could be used to share the channel between the many nodes.

[0093] The GPS data may allow the node to confine the search region to the error band of its position data and the error band of the peer node's position data. This error may range from a worst case of 8 degrees in the horizontal plane at extremely close range (80 meters) and 1 degree in the Z axis to a worst case of 0.6 degrees in the horizontal at 10 km and 0.006 degrees in the Z axis. This may allow for a much faster search process during Alignment.

[0094] Some embodiments employ a GPS-assisted search using an access subsystem. These approaches may remove the need for an extra communication system solely for the purpose of alignment. For example, the access subsystem wireless range may allow the nodes to communicate directly with each other and to relay their address and coordinate information. As this information payload may be transmitted at a low data rate, it may be possible to use a lower bit rate (fewer bits/Hz) to pass the message.

[0095] Unfortunately, the access technology's range may render the GPS-assisted search using an access subsystem approach unfeasible in some situations. The limited range may prevent the passage of address and coordinate information to the neighboring nodes. In these situations, the passive transfer of peer information by users travelling between nodes as described herein may be used instead.

Alignment—Barometric Elevation Inference

[0096] In some embodiments the nodes may be able to infer their location exclusively from GPS information, information provided by an installing technician, etc. However, in some embodiments, position information may be inferred from a plurality of sources. In some embodiments, relative pressure information may be used by the nodes to complement GPS information so as to achieve more accurate determinations of the nodes' relative orientations. For example, FIG. 21 is a cross-sectional perspective view of an incline **2110a** upon which nodes **2115a-c** are placed and relative barometric readings are taken as may occur in some embodiments. The location logs, or other information transferred passively between the nodes, may include a barometric reading for a node. The nodes may compare the difference between their own barometric reading and the reading of a peer to infer the difference in elevation (and corresponding angle in which to scan the window). In this example, the node **2115a** is at a slightly lower elevation relative to node **2115b**. Accordingly, the pressure at node **2115a** is higher than at node **2115b** and a small, positive (+10) difference is noted. In contrast, node **2115c** is located at a much higher elevation than node **2115b**. Accordingly, the pressure at node **2115c** is lower than at node **2115b** and a large, negative (−75) difference is noted. The pressure to angle correspondence may be inferred from a table or determined dynamically.

[0097] FIG. 22 is a three-dimensional perspective view of several nodes **2205a-d** and their barometric readings relative to a first node as may occur in some embodiments. Based on relative barometric readings and peer node locations relative to the terrestrial plane, each node may be able to infer a

topological mapping of its local surroundings. For example, the node **2205d** may recognize, based e.g., on GPS coordinates, that within the terrestrial plane **2215** (i.e., a plane perpendicular to a line passing from the node to the center of the Earth) it is a distance **2210a** from the node **2205a**, a distance **2210b** from the node **2205b**, and a distance **2210c** from the node **2205c**. There may be a relative pressure distance of +80, -75, and -25 for each of the respective nodes **2205a-c** relative to node **2205d**. From these differences, node **2205d** may infer relative vertical heights **2225a-c** for each of nodes **2205a-c**. With the heights **2225a-c** and distances **2210a-c** known, the node **2205d** may readily infer the Euclidean distance **2220a-c** to each node and the corresponding angle relative to the terrestrial plane **2215**.

[0098] FIG. 23 is a flow diagram depicting a process for orienting peer-nodes during Alignment based upon their peers' barometric data as may occur in some embodiments. At block **2305**, the node may determine the peer nodes nearest in the terrestrial plane. At block **2310**, the node may determine the in-plane distance to the peer. At block **2315**, the node may determine the relative barometric deltas do the nearest peers and the corresponding height values. At block **2320**, the node may determine the Euclidean distance to the nearest peers. At block **2325**, the node may determine the angle to the nearest peers. At block **2330**, the node may update its locally stored information regarding the nearest peers to reflect their relative positioning. At block **2340**, the node may orient to the nearest peer, e.g., as part of a default connection prior to Association.

Association

[0099] In a system where each node has only enough communication links to reach some of its neighboring nodes, it may be very desirable for the system to choose the correct adjacent node to link to in accordance with the Planning phase. If the system additionally has communication links with different speeds, it may be especially preferred that the correct pairs of links (e.g., as specified in the Planning process) are established. The Association phase includes one or more processes for ensuring that appropriate links are formed.

[0100] The transition from the Alignment process to Association may occur based on one or more conditions, or may occur organically node-by-node as each acquires sufficient information regarding their peers. For example, in some embodiments each node may transition from the Alignment procedure to the Association procedure after a fixed period of time, after a sufficient amount of peer location information has been acquired, or upon some other signal.

[0101] Once Alignment completes, the default associations between nodes may not properly reflect the desired, planned association. FIG. 24 is topological block diagram depicting isolated formations following Alignment and prior to Association as may occur in a deployed Cartesian mesh in some embodiments. Isolated "island" networks **2405a,b** have formed lacking a backbone connection, let alone the appropriate backbone connection determined during Planning. In this example, only node **2410a** has properly associated with backbone connection **2415a** as intended during Planning. While node **2410b** may recognize both nodes **2410c** and **2410a** as being within LOS range, node **2410b** may have formed a default association with node **2410c**. Similar default reasoning may have resulted in node **2410d** failing to associate with node **2415a**, node **2410e** failing to associated with

node **2410f**, and **2410f** with backbone **2415c**. As discussed herein, the nodes within isolated networks **2405a,b** may recognize that they lack a connection with a backbone **2415b**. Each node may share path information with its peers until a path to the backbone connection has been identified.

[0102] FIG. 25 is topological block diagram depicting an end ranking following Association as may occur in a deployed Cartesian mesh in some embodiments. In this example, each node is given a two part topological reference, referred to herein as a rank: (X,Y). The first part of the rank (X, the backbone component) represents the node's relation to the backbone (e.g., to a high speed network devices). The second part of the rank (Y, the subnetwork component) represents the node's relation to other nodes in the subnetwork (e.g., to the regular speed network devices). The relation may be, e.g., a number of hops from a backbone node associated with the subnetwork. The presence of a backbone input to a node's hardware may result in the node automatically assigning itself a rank of 0 for the backbone rank and 0 for the subnetwork rank. For example, initially nodes **2505a-d** may have had rank 0,0. As they began communication with one another, they would select unique backbone rank identifiers as indicated. Nodes unconnected to the backbone may begin with an arbitrary, non-zero X rank (e.g., 9999).

[0103] A node **2505a** with a hardcoded (0,0) rank may look through its list of neighboring node coordinates and determine which nodes are closest and have a rank of (X,0) where the X is any value (the nodes **2505b-d** will assume other X ranks as knowledge of the node **2505a** propagates). The node **2505a** may retain this (0,0) ranking based on a hard-coded preference specified in the planning phase (e.g., a literal hard-coding by the installing technician, a rule established in the logic code, etc.). This node may then begin a search with its high speed optical heads (or whatever other communications module is available to the embodiment) in the direction of the neighboring nodes.

[0104] As the location of the (0,0) ranked node propagates among the other devices, the other devices will begin to search in the direction of the (0,0) node using the GPS coordinates of the (0,0) node. When a node finds the (0,0) node it may review the ranking information to determine if it falls within the subnetwork of the 0,0 node. If so, the node **2510a** may update its rank to (1,0). The distance between nodes may govern the priority of assignment, resulting in there being eventually only one (1,0) ranked node **2505b** on the backbone connected to the (0,0) node **2505a**. This rank is updated in the broadcast message passed on to the neighboring nodes. Each other node with rank (X,0) then starts a search looking for node (1,0) until a link is made and the new node **2505c** is given the rank (2,0) and so on.

[0105] In a similar manner, the regular speed node links closest to node **2505a** may seek out the node with the (0,Y) where Y is any number (the preference for X being zero again based on a total ordering associated with distance). Each node which has been informed of a nearby node with a (0,Y) rank may begin a search of the coordinate area around the GPS coordinates of the node. The (0,Y) node may begin a search in the direction of the closest (X,Y) nodes. When a link is established the node **2510a-d** updates its rank to (1,Y) and this rank is updated in the message shared with neighboring nodes. Other nodes without associated hardware that receive the message with a device with a (1,Y) node begin a search in the direction of the (1,Y) node and the process continues from there.

[0106] In the event a node determines that it has moved through a loss of connectivity or through a change in its GPS coordinates it may reset its rank to the defaults and allow/cause the process to begin again. Similarly, if a node detects a node with coordinates closer than a node of the appropriate rank, it may infer that a new node is present, or that a node has been moved. Consequently, the node may reset its rank allowing the search procedure to restart. Thus, in some embodiments the node Association process may proceed generally as follows: 1) From an initial start state (e.g., following installation or reset), every node selects a random rank between 1 and N where N is the number of nodes in the network, excluding node 0. Node 0 selects rank 0; 2) Each time a node receives a location list update (e.g., from a passing person, or from a neighbor node) it looks through the list to identify the location of the first known node with a higher rank and the first known node with a lower rank as given by the list; and 3) The node then attempts to connect first to the lower rank node (i.e. closer to node 0).

[0107] In this example, if the connection is successful, the node updates its rank to the rank of the node it connected to +1. It then attempts to connect to the higher ranked node. If the connection to the higher ranked node succeeds the node it connected to updates its rank to the connecting node's rank + 1. For example, a node (arbitrarily referred to as "Node Z") with Y rank 5 receives a list that identifies the location of nodes with Y ranks 0, 2, 8, 10. Node Z first attempts to connect to the node with Y rank 2. If the connection is successful Node Z's Y rank is updated to rank 3. Node Z may attempt to connect to the node Y ranked 8 and if successful, the node Y ranked 8 updates its Y rank to 6 instead.

[0108] FIG. 26 is a flow diagram depicting a local process for updating a node ranking as may occur in some embodiments. At block 2605, the node may actively solicit ranking information from its peers. At block 2610, the node may determine if the acquired ranking information includes a backbone node. At block 2615, the node may notify its peers of the decision to adjust its ranking. At block 2620, the node may adjust its ranking. Subsequent requests for its ranking information will now include this new ranking. At block 2625, the node may passively solicit ranking information from its peers.

[0109] As discussed above, ranking information may back-propagate to the connection nodes on the backbone. The backbone nodes have knowledge of the desired network topology and may resubmit the ranking information into the network so as to accord with the preferred ranking. Accordingly, at block 2630 the node may determine if a higher prioritized path has been identified, e.g., as designated by a backbone node. If so, the ranking may be adjusted pursuant to blocks 2615 and 2620. If no higher priority information has been received, then the node may continue to passively listen for incoming ranking information.

Network Topology Variations

[0110] FIG. 27 is a topological block diagram depicting a Star-network 2700 following Association as may occur in some embodiments. The planning phase may have imposed ranking conditions such that nodes 2710a,b either facilitate branching, or do not facilitate branching from the backbone node. As discussed herein, branching may be suitable at points of high elevation (buildings, mountains, etc.) and for nodes having many different communication components (e.g., more optical components and more memory).

Data Caching

[0111] FIG. 28 is a topological block diagram depicting a caching topology in a Cartesian-network as may occur in some embodiments. During the planning phase, locations may be strategically determined where heavy usage or traffic may occur. At these strategic points, caching (or additional caching) memory may be provided to improve the network's efficiency during operation.

Routing Application

[0112] FIG. 29 is a topological block diagram depicting a rerouting event in a Cartesian-network as may occur in some embodiments. For example, fog 2905 may form between the nodes 2910a and 2910b. During the planning phase, the anticipated weather patterns may be taken into consideration and alternative routing preferences included in the distributed nodes. For example, node 2910a may be redirected to form an optical connection with node 2910c. In some embodiments this rerouting may be performed dynamically, e.g., by restarting the Association process for the nodes disconnected from the backbone. In some embodiments, this Association process may differ from the original Association and may consider rerouting guidance provided from the planning phase. Routing adjustments may not only include the creation of new connections, but may instead include communication module changes. For example, fog 2905 may be impenetrable at optical wavelengths, but not a microwave wavelengths. Accordingly, nodes 2910a and 2910b may switch to another communication medium (e.g., microwave) until the condition abates.

Computer System

[0113] FIG. 30 is a block diagram of a computer system as may be used to implement features of some of the embodiments (e.g., as may be used to perform the Planning process or as may appear in the node 200). The computing system 3000 may include one or more central processing units ("processors") 3005, memory 3010, input/output devices 3025 (e.g., keyboard and pointing devices, display devices), storage devices 3020 (e.g., disk drives), and network adapters 3030 (e.g., network interfaces) that are connected to an interconnect 3015. The interconnect 3015 is illustrated as an abstraction that represents any one or more separate physical buses, point to point connections, or both connected by appropriate bridges, adapters, or controllers. The interconnect 3015, therefore, may include, for example, a system bus, a Peripheral Component Interconnect (PCI) bus or PCI-Express bus, a HyperTransport or industry standard architecture (ISA) bus, a small computer system interface (SCSI) bus, a universal serial bus (USB), IIC (I2C) bus, or an Institute of Electrical and Electronics Engineers (IEEE) standard 1394 bus, also called "Firewire".

[0114] The memory 3010 and storage devices 3020 are computer-readable storage media that may store instructions that implement at least portions of the various embodiments. In addition, the data structures and message structures may be stored or transmitted via a data transmission medium, e.g., a signal on a communications link. Various communications links may be used, e.g., the Internet, a local area network, a wide area network, or a point-to-point dial-up connection. Thus, computer readable media can include computer-readable storage media (e.g., "non transitory" media) and computer-readable transmission media.

[0115] The instructions stored in memory 3010 can be implemented as software and/or firmware to program the processor(s) 3005 to carry out actions described above. In some embodiments, such software or firmware may be initially provided to the processing system 3000 by downloading it from a remote system through the computing system 3000 (e.g., via network adapter 3030).

[0116] The various embodiments introduced herein can be implemented by, for example, programmable circuitry (e.g., one or more microprocessors) programmed with software and/or firmware, or entirely in special-purpose hardwired (non-programmable) circuitry, or in a combination of such forms. Special-purpose hardwired circuitry may be in the form of, for example, one or more ASICs, PLDs, FPGAs, etc.

Remarks

[0117] The above description and drawings are illustrative and are not to be construed as limiting. Numerous specific details are described to provide a thorough understanding of the disclosure. However, in certain instances, well-known details are not described in order to avoid obscuring the description. Further, various modifications may be made without deviating from the scope of the embodiments. Accordingly, the embodiments are not limited except as by the appended claims.

[0118] Reference in this specification to “one embodiment” or “an embodiment” means that a particular feature, structure, or characteristic described in connection with the embodiment is included in at least one embodiment of the disclosure. The appearances of the phrase “in one embodiment” in various places in the specification are not necessarily all referring to the same embodiment, nor are separate or alternative embodiments mutually exclusive of other embodiments. Moreover, various features are described which may be exhibited by some embodiments and not by others. Similarly, various requirements are described which may be requirements for some embodiments but not for other embodiments.

[0119] The terms used in this specification generally have their ordinary meanings in the art, within the context of the disclosure, and in the specific context where each term is used. Certain terms that are used to describe the disclosure are discussed below, or elsewhere in the specification, to provide additional guidance to the practitioner regarding the description of the disclosure. For convenience, certain terms may be highlighted, for example using italics and/or quotation marks. The use of highlighting has no influence on the scope and meaning of a term; the scope and meaning of a term is the same, in the same context, whether or not it is highlighted. It will be appreciated that the same thing can be said in more than one way. One will recognize that “memory” is one form of a “storage” and that the terms may on occasion be used interchangeably.

[0120] Consequently, alternative language and synonyms may be used for any one or more of the terms discussed herein, nor is any special significance to be placed upon whether or not a term is elaborated or discussed herein. Synonyms for certain terms are provided. A recital of one or more synonyms does not exclude the use of other synonyms. The use of examples anywhere in this specification including examples of any term discussed herein is illustrative only, and is not intended to further limit the scope and meaning of the disclosure or of any exemplified term. Likewise, the disclosure is not limited to various embodiments given in this specification.

[0121] Without intent to further limit the scope of the disclosure, examples of instruments, apparatus, methods and their related results according to the embodiments of the present disclosure are given above. Note that titles or subtitles may be used in the examples for convenience of a reader, which in no way should limit the scope of the disclosure. Unless otherwise defined, all technical and scientific terms used herein have the same meaning as commonly understood by one of ordinary skill in the art to which this disclosure pertains. In the case of conflict, the present document, including definitions will control.

What is claimed is:

1. A computer-implemented method for generating network node placements, comprising:
 - receiving real-world information for a target region;
 - determining a first plurality of priority directions based upon the real-world information;
 - generating a first set of node positions based upon the first plurality of priority directions and a position on the network backbone;
 - determining a second plurality of priority directions based upon the real-world information, the first set of node positions, and a Line-of-Sight (LOS) range associated with the first set of node positions;
 - generating a second set of node positions based upon the second plurality of priority directions; and
 - determining a path comprising a subset of the generated first and second sets of node positions, the path indicating network node placements.
2. The computer-implemented method of claim 1, wherein the real-world information for the target region comprises population information.
3. The computer-implemented method of claim 1, wherein the first set of node positions comprises a single node’s position, and the second set of node positions comprises candidate child node positions placed along a span associated with the single node, a width of the span determined based on a location of a centroid based upon the real-world information.
4. The computer-implemented method of claim 1, wherein the path is one of a plurality of paths determined from subsets of generated nodes.
5. The computer-implemented method of claim 4, wherein the plurality of paths are associated with metric values forming a partial ordering.
6. The computer-implemented method of claim 1, further comprising generating path metadata associated with the path, the path metadata indicating communication devices to be included in nodes of the path.
7. The computer-implemented method of claim 6, wherein the path metadata comprises caching capabilities associated with nodes in the path.
8. The computer-implemented method of claim 6, wherein the path metadata comprises rerouting information associated with nodes in the path.
9. A computer-readable storage medium storing instructions configured to cause a computer system to perform a method comprising:
 - receiving real-world information for a target region;
 - determining a first plurality of priority directions based upon the real-world information;
 - generating a first set of node positions based upon the first plurality of priority directions and a position on the network backbone;

determining a second plurality of priority directions based upon the real-world information, the first set of node positions, and a Line-of-Sight (LOS) range associated with the first set of node positions;
 generating a second set of node positions based upon the second plurality of priority directions; and
 determining a path comprising a subset of the generated first and second sets of node positions, the path indicating network node placements.

10. The computer-readable storage medium of claim **9**, wherein the real-world information for the target region comprises population information.

11. The computer-readable storage medium of claim **9**, wherein the first set of node positions comprises a single node's position, and the second set of node positions comprises candidate child node positions placed along a span associated with the single node, a width of the span determined based on a location of a centroid based upon the real-world information.

12. The computer-readable storage medium of claim **9**, wherein the path is one of a plurality of paths determined from subsets of generated nodes.

13. The computer-readable storage medium of claim **12**, wherein the plurality of paths are associated with metric values forming a partial ordering.

14. The computer-readable storage medium of claim **9**, the instructions further comprising generating path metadata associated with the path, the path metadata indicating communication devices to be included in nodes of the path.

15. The computer-readable storage medium of claim **14**, wherein the path metadata comprises caching capabilities associated with nodes in the path.

16. The computer-readable storage medium of claim **14**, wherein the path metadata comprises rerouting information associated with nodes in the path.

17. A computer system comprising:
 at least one processor;
 at least one memory comprising instructions configured to cause the at least one processor to perform a method comprising:

receiving real-world information for a target region;
 determining a first plurality of priority directions based upon the real-world information;
 generating a first set of node positions based upon the first plurality of priority directions and a position on the network backbone;
 determining a second plurality of priority directions based upon the real-world information, the first set of node positions, and a Line-of-Sight (LOS) range associated with the first set of node positions;
 generating a second set of node positions based upon the second plurality of priority directions; and
 determining a path comprising a subset of the generated first and second sets of node positions, the path indicating network node placements.

18. The computer system of claim **17**, wherein the real-world information for the target region comprises population information.

19. The computer system of claim **17**, wherein the first set of node positions comprises a single node's position, and the second set of node positions comprises candidate child node positions placed along a span associated with the single node, a width of the span determined based on a location of a centroid based upon the real-world information.

20. The computer system of claim **17**, wherein the path is one of a plurality of paths determined from subsets of generated nodes.

21. The computer system of claim **20**, wherein the plurality of paths are associated with metric values forming a partial ordering.

22. The computer system of claim **17**, further comprising generating path metadata associated with the path, the path metadata indicating communication devices to be included in nodes of the path.

23. The computer system of claim **22**, wherein the path metadata comprises caching capabilities associated with nodes in the path.

24. The computer-readable storage medium of claim **22**, wherein the path metadata comprises rerouting information associated with nodes in the path.

* * * * *